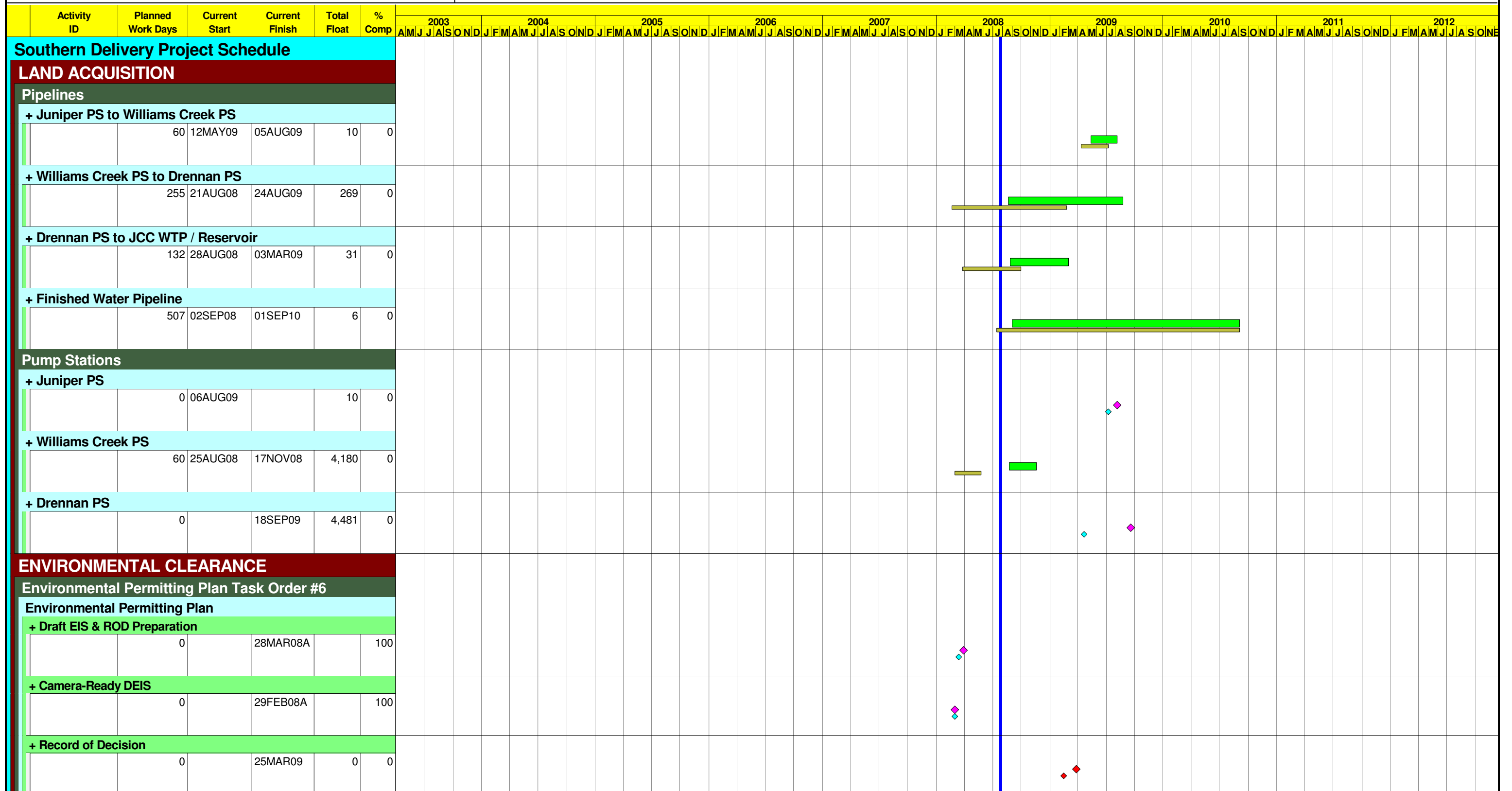


Southern Delivery System Project

Monthly Report, July 2008

Management Summary Schedule



PIPELINES

Raw Water Pipelines

+ Schematic Design

	753	08AUG05A	25JUL08A		100
--	-----	----------	----------	--	-----

Preliminary Design

+ South (Juniper to Williams)

	1,449	14JAN03A	26SEP08	-780	97
--	-------	----------	---------	------	----

+ North (1 & 2)

	409	14NOV02A	25JUN04A		100
--	-----	----------	----------	--	-----

+ Final Design - North Pipelines

	351	17FEB04A	01JUL05A		100
--	-----	----------	----------	--	-----

Final Design - South Pipelines

+ South (Juniper to Williams)

	260	31JUL08	10AUG09	-780	0
--	-----	---------	---------	------	---

Special Services

+ South (Juniper to Williams)

	624	01FEB05A	16JUL07A		100
--	-----	----------	----------	--	-----

+ Bid / Award

	292	01APR09	25MAY10	3	0
--	-----	---------	---------	---	---

Construction

+ Juniper PS Suction Pipeline

	253	24NOV09	23NOV10	246	0
--	-----	---------	---------	-----	---

+ South (Juniper to Williams)

	384	24NOV09	01JUN11	115	0
--	-----	---------	---------	-----	---

+ North 1 (Williams to Drennan)

	331	15FEB10	02JUN11	114	0
--	-----	---------	---------	-----	---

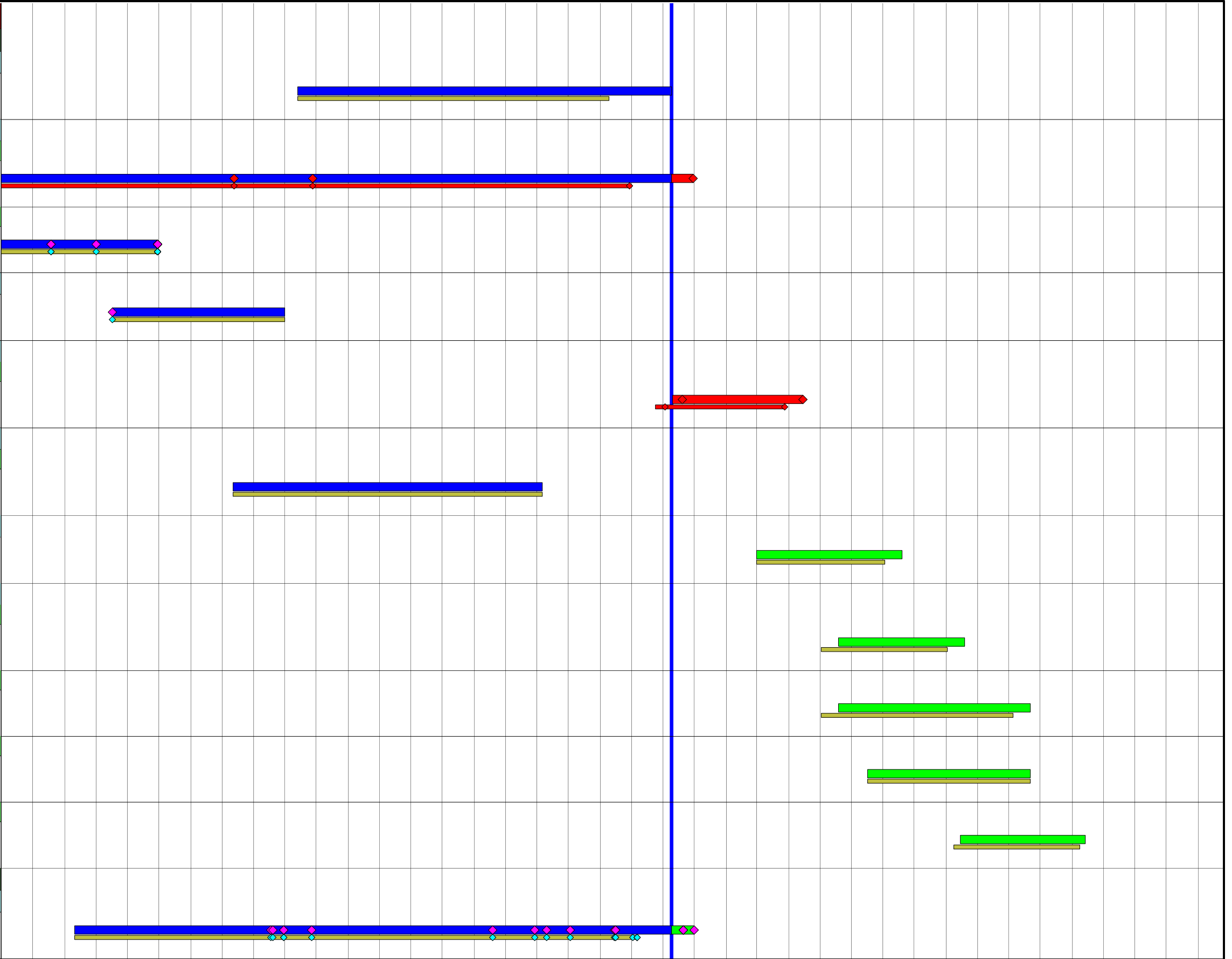
+ North 2 (Drennan to WTP)

	252	11NOV10	08NOV11	3	0
--	-----	---------	---------	---	---

Finished Water Pipelines

+ Preliminary Design

	1,245	31OCT03A	29SEP08	6	90
--	-------	----------	---------	---	----



Final Design

+ Construction Documents

	265	30SEP08	15OCT09	228	0
--	-----	---------	---------	-----	---

+ Bid / Award

	80	02SEP10	29DEC10	6	0
--	----	---------	---------	---	---

Construction

+ Pueblo - Suction Tie in

	194	26MAR09	31DEC09	512	0
--	-----	---------	---------	-----	---

+ Security - Finished Water Tie in

	155	26MAR09	02NOV09	551	0
--	-----	---------	---------	-----	---

+ Construction FW Pipelines

	255	30DEC10	30DEC11	6	0
--	-----	---------	---------	---	---

PUMP STATIONS

Common to North Pump Stations

+ Preliminary Design

	330	02DEC02A	19MAR04A		100
--	-----	----------	----------	--	-----

+ Final Design

	1,215	04FEB04A	13NOV08	110	97
--	-------	----------	---------	-----	----

Alternatives

+ Hwy 115-Ark Otero PS's Conceptual Designs

	132*	23JAN07A	27JUL07A		100
--	------	----------	----------	--	-----

+ Minnequa Ditch Turnout & PS

	306	15OCT07A	31DEC08	4,664	11
--	-----	----------	---------	-------	----

Williams Creek Pump Station

+ Final Design

	335	04FEB04A	26MAY05A		100
--	-----	----------	----------	--	-----

+ Special Services

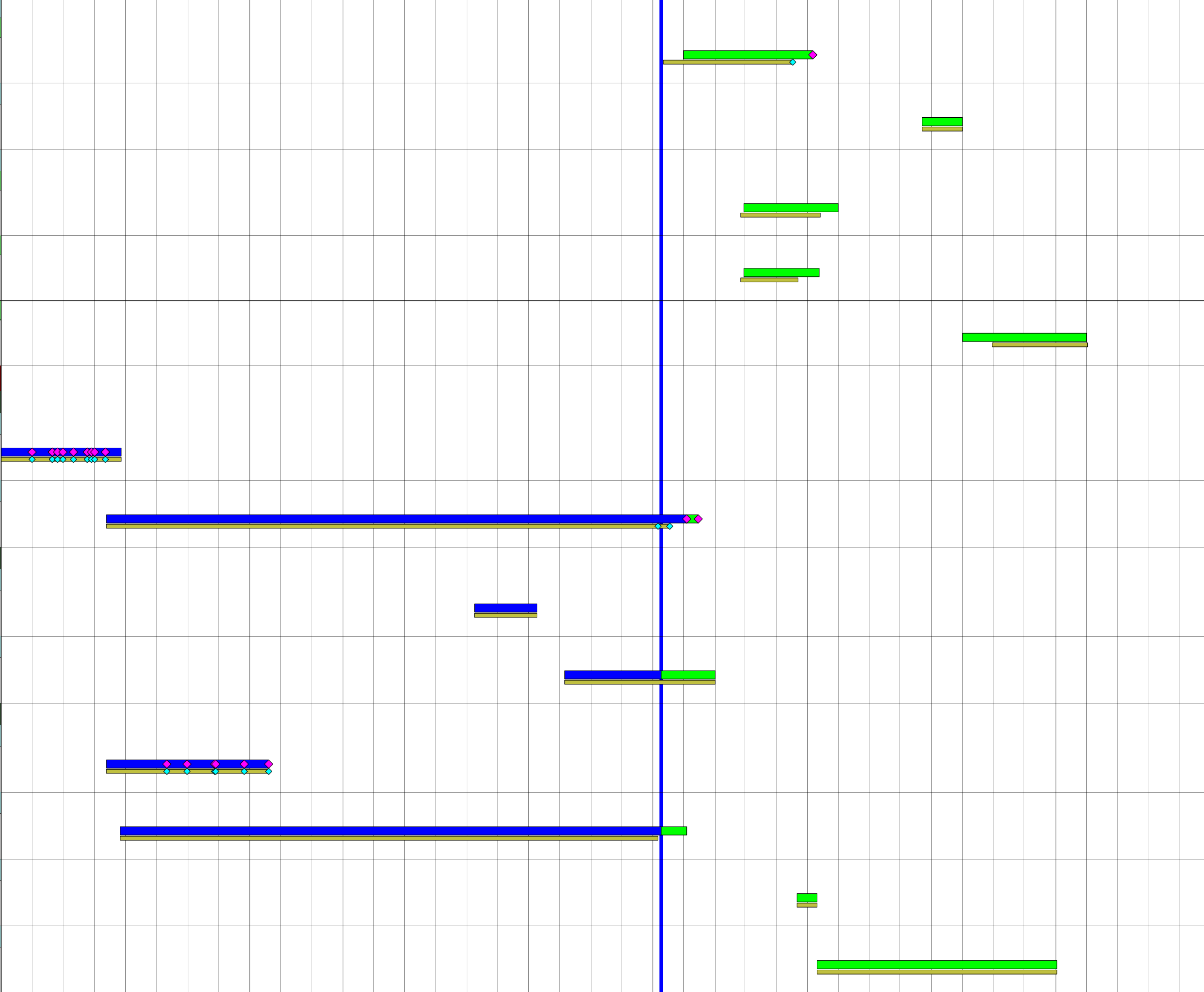
	1,160*	17MAR04A	09OCT08	110	0
--	--------	----------	---------	-----	---

+ Bid / Award

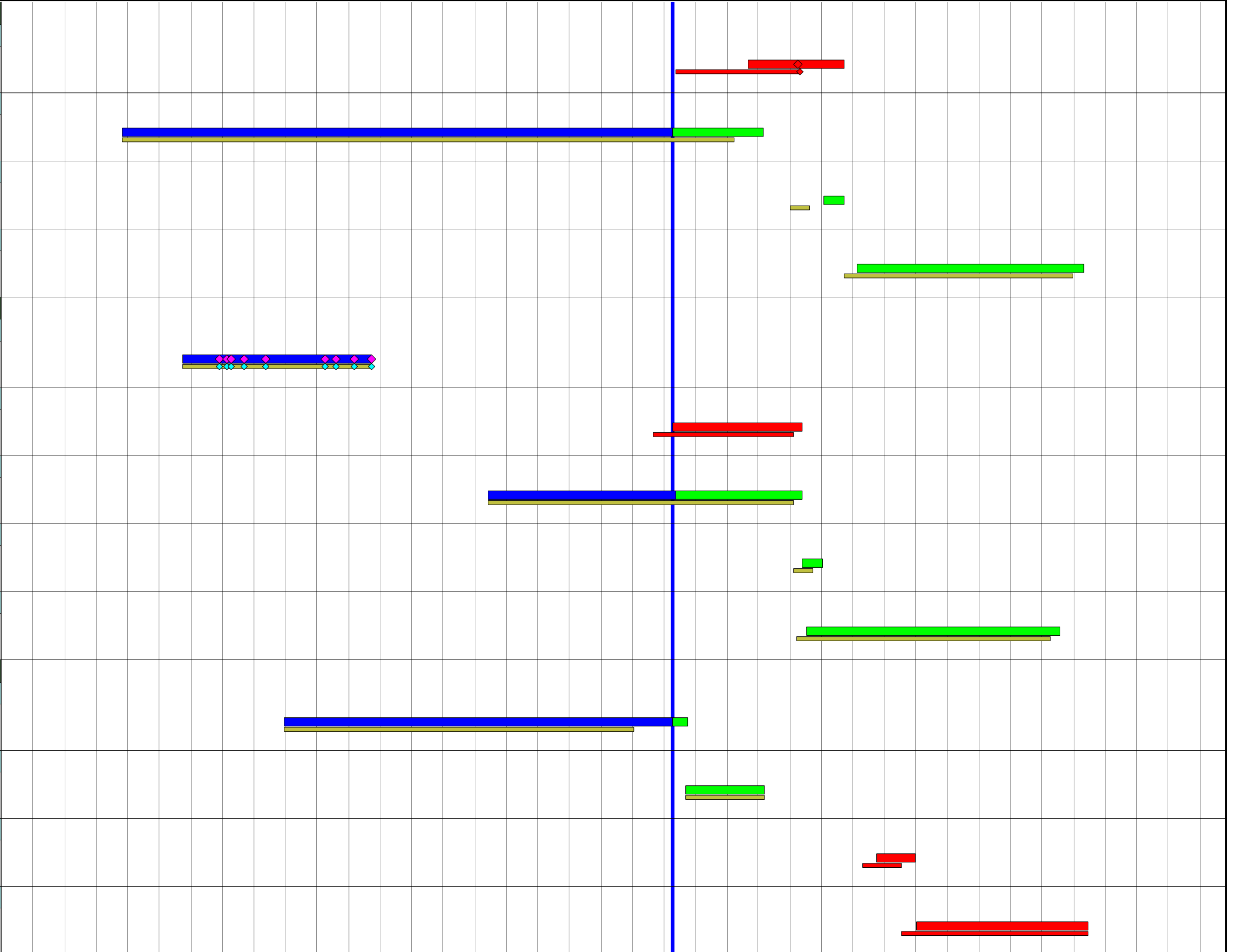
	40	01SEP09	27OCT09	3,964	0
--	----	---------	---------	-------	---

+ Construction

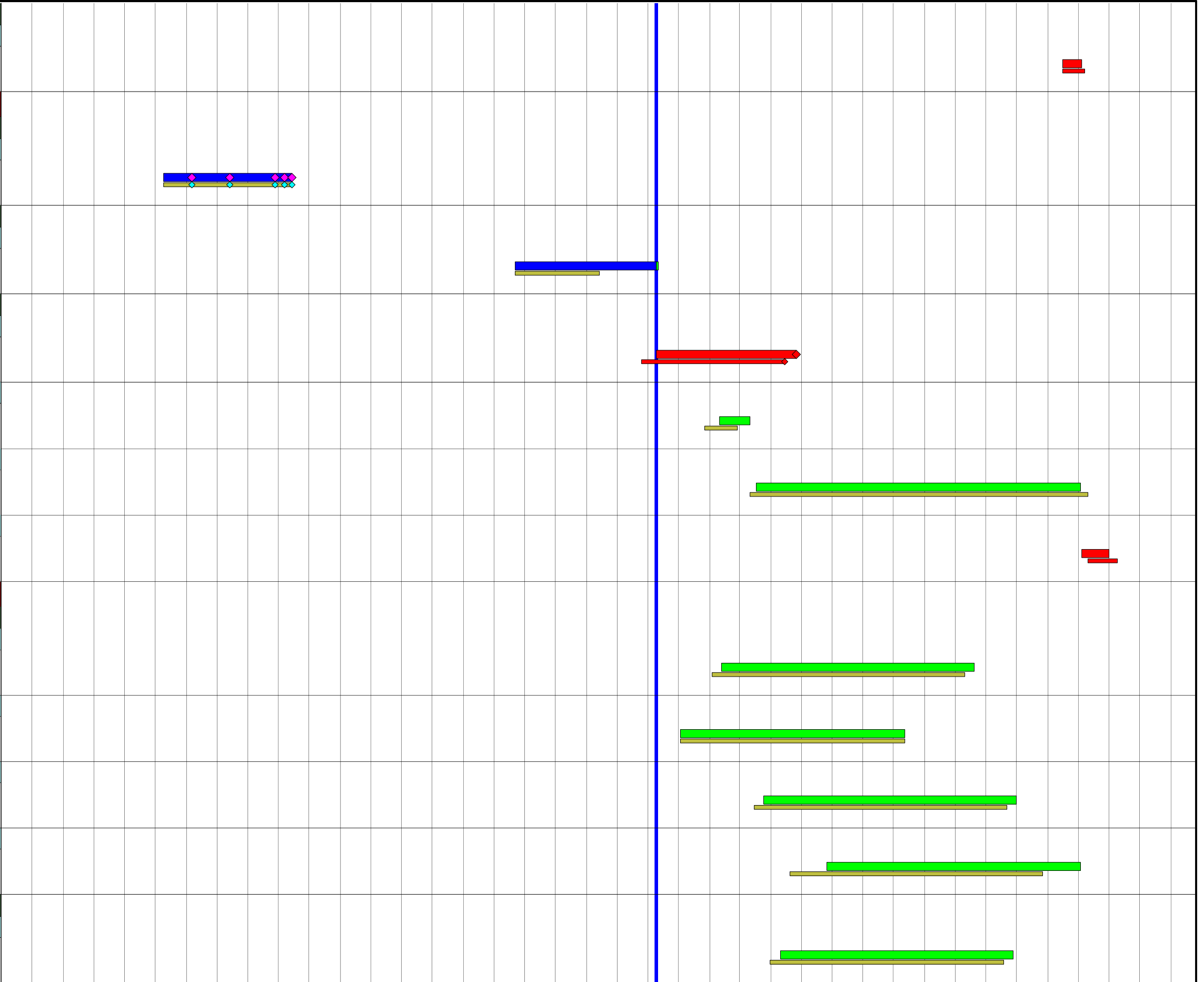
	490*	28OCT09	04OCT11	3,964	0
--	------	---------	---------	-------	---



Drennan Pump Station					
+ Final Design					
	195	02MAR09	04DEC09	-953	0
+ Special Services					
	1,287	17MAR04A	13APR09	2	86
+ Bid / Award					
	40	08OCT09	04DEC09	34	0
+ Construction					
	458	13JAN10	28OCT11	10	0
Juniper Pump Station					
+ Preliminary Design					
	381	07SEP04A	08MAR06A		100
+ Final Design					
	261	28JUL08	06AUG09	-953	0
+ Special Services					
	632	09FEB07A	06AUG09	17	3
+ Bid / Award					
	40	07AUG09	02OCT09	11	0
+ Construction					
	510	18AUG09	22AUG11	10	0
Booster Pump Station					
+ Preliminary Design					
	813*	27JUN05A	09SEP08	228	90
+ Final Design					
	158	02SEP08	16APR09	101	0
+ Bid / Award					
	80	09MAR10	29JUN10	0	0
+ Construction					
	347	02JUL10	11NOV11	0	0



System Start Up					
+					
	37	14NOV11	10JAN12	0	0
WATER TREATMENT PLANT					
Preliminary Design Task Order #9					
+ Preliminary Design					
	267	26JUL04A	11AUG05A		100
Upper Williams Creek WTP					
+ UWC WTP Locations					
	296	04JUN07A	01AUG08	4,767	94
Water Treatment Plant Final Design- Construction					
+ Final Design					
	288	28JUL08	15SEP09	-807	0
+ Bid / Award					
	66	29JAN09	30APR09	5	0
+ Construction					
	665	20MAY09	06JAN12	2	0
+ Start Up					
	58	11JAN12	30MAR12	0	0
SYSTEMWIDE INFRASTRUCTURE					
Power Supply					
+ Juniper PS					
	520	06FEB09	25FEB11	10	0
+ Williams Creek PS					
	460	08OCT08	03AUG10	4,101	0
+ Drennan PS					
	520	11JUN09	29JUN11	10	0
+ Water Treatment Plant					
	520	16DEC09	06JAN12	2	0
Communications					
+ Juniper PS					
	480	29JUL09	20JUN11	10	0



+ Williams Creek PS

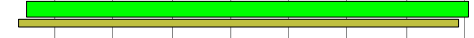
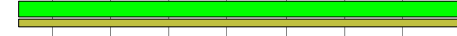
480 10AUG09 30JUN11 3,964 0

+ Drennan PS

480 07AUG09 29JUN11 10 0

+ Water Treatment Plant

480 15FEB10 06JAN12 2 0



Start Date
Finish Date
Data Date
Run Date

01MAY02
04JUN27
26JUL08
11AUG08 15:31

0708
RESP = Responsible Party
CLI: Client Action
CH: CH2M Action