

# MINUTES

## Southern Delivery System (SDS)

### Juniper Pump Station (JPS) -- Final Architectural Review Meeting

<b>Date:</b>	September 20, 2012	<b>Location:</b>	Lake Pueblo State Park Visitor Center with Field Visit to the JPS Site
<b>Start Time:</b>	1:00 PM	<b>Finish Time:</b>	4:00 PM
<b>Lead Facilitator:</b>	Steve Duling		
<b>Meeting Participants</b>	Dan Higgins – Colorado Springs Utilities SDS Program Manager Steve Duling – Colorado Springs Utilities SDS RWPS Project Manager Matthew Schultz – MWH SDS Project Engineer Tara Piper – US Bureau of Reclamation Natural Resources Specialist Brad Henley – Lake Pueblo State Park Manager Julie Ann Woods – Pueblo County Dept of Planning & Development Director Bob Schmidt – Pueblo County Dept of Engineering & Public Works Director		

#### Introductions – Steve Duling

#### Juniper Pump Station Architectural History – Dan Higgins

- Dan Higgins reviewed the JPS architecture that was presented in 2010. At the 2010 architectural workshop there was agreement on the “red brick” theme, which the Pueblo County Commissioners recognized through a resolution (Resolution 10-299) as the preferred architectural theme.
- Dan Higgins stated that the current architectural renderings follow the same “red brick” theme presented in 2010. Brick style, color and placement are the same.
- Dan Higgins stated that at this stage in the design process we are prepared to finalize the JPS architecture.

#### Current Juniper Pump Station Architecture – Steve Duling

- Steve Duling presented the current architectural renderings of the Juniper Pump Station. The renderings show the same color scheme and brick selections as the 2010 renderings.
- Steve Duling presented the artistic images that were presented in 2010 and demonstrated that the 2012 artistic images are substantially similar to the 2010 images.
- Steve Duling presented the same brick color samples that were presented during the 2010 workshop. The brick color samples are from Summit Brick and Tile. The colors samples are: Nutmeg : 850-5, Inca : 653, and Heirloom : 558



# MINUTES

- Julie Ann Woods and Tara Piper asked questions regarding the durability and color of the brick chosen in 2010 which is being resubmitted for the Final Architectural review. Brad Henley stated that brick buildings are appropriate within Lake Pueblo State Park as they match existing infrastructure and that the existing red brick buildings have held up well to environmental conditions within the park.
- Bob Schmidt noted that the materials and colors used in the 2012 artistic renderings are substantially similar to the 2010 artistic renderings and offered that we may want to consider widening the windows and louvers. The participants discussed this and further noted that the East side of the pump station is predominantly obscured from the general public as there is a hill on the east side of the pump station.
- Brad Henley stated that his and the group's preference was the "red brick" theme in 2010 to match the other red brick structures in the Lake Pueblo State Park. A lighter building would not be consistent with the other structures in the park. Brad stated that his preference is still the "red brick" theme.
- Brad Henley inquired about the site lighting plans
- Steve Duling stated that the design team anticipates a street light at the entrance gate and lights above the entrance doors into the pump station. Additional site lighting will be reviewed with the group at a future landscape review meeting.

## Next Steps – Steve Duling

- Steve Duling stated that the group could reconvene in late October or November for the final selection of the JPS landscaping.
- Julie Ann Woods asked about the kind of trees and plants that may be presented for the landscape review
- Brad Henley stated that State Parks preference is for no irrigation and all native species. Also, large plantings can pose an additional security risk by reducing visibility around the structure.
- Steve Duling stated that the current plan is to incorporate rock mulch and revegetate disturbed areas using the seed mix that has been approved by Reclamation on SDS work packages PDC-1A, PDC-1B and S-1.
- Bob Schmidt stated that he would present the architectural renderings to the Pueblo County Commissioners on Monday, 9/24/12. This date may slide depending on individual's schedules. Bob will contact Steve Duling by email or phone after the Commissioners have had a chance to review.

## Juniper Pump Station Site Visit – Steve Duling

- The group (minus Julie Ann Woods) convened at the site of the future Juniper Pump Station. The site had been previously surveyed, and major features had been marked with survey stakes. Steve Duling guided the group through the site and identified the major features such as the access road, loop road, site security fence, pump station, vaults and storm water pond.

# MINUTES

- Bob Schmidt noted that the entrance road to JPS was not lined up with Rock Canyon Road.
- Steve Duling stated that the design team will review the entrance road design and correct.
- Steve Duling stated that the design team will review the site security fence and optimize the fence footprint .

## **Attachments to Meeting Minutes**

Attachment A → Meeting Agenda

Attachment B → Images Reviewed During Meeting

Attachment C → Images of Brick Samples Outside  
Lake Pueblo State Park Visitors Center



**Attachment A = Meeting Agenda**

## Southern Delivery System (SDS) Juniper Pump Station Architectural Review

Location: Lake Pueblo State Park Visitors Center

Meeting Date: September 20, 2012

### Meeting Participants:

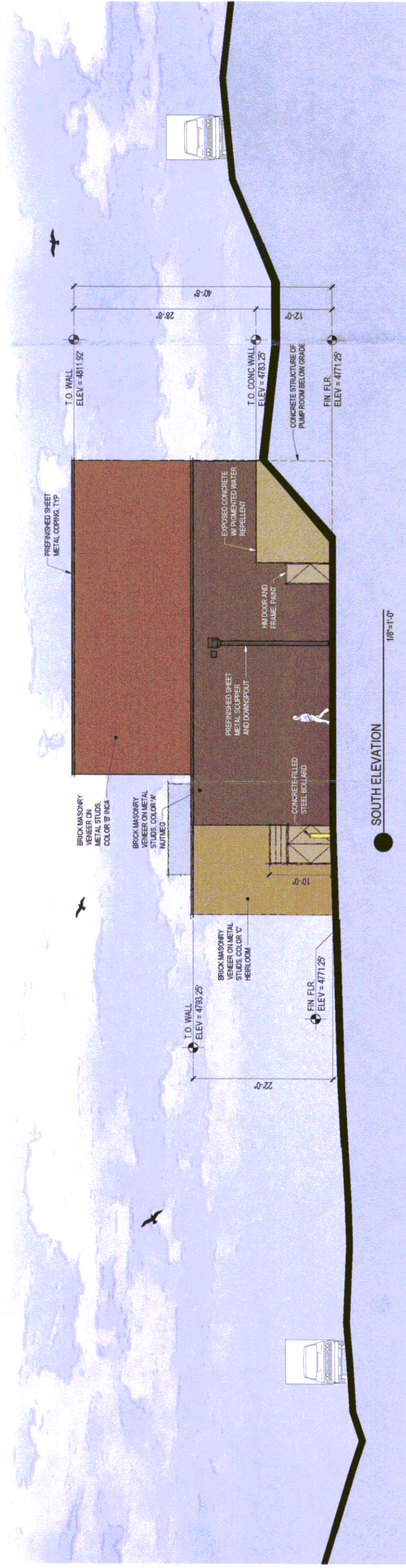
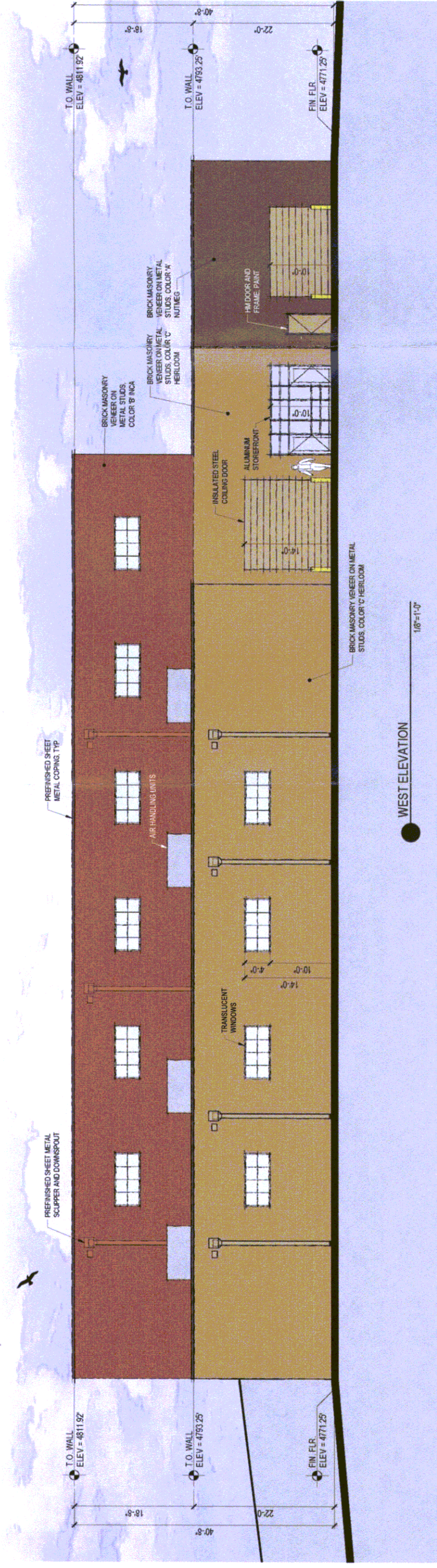
- Colorado Springs Utilities SDS Program Manager – Dan Higgins
- Colorado Springs Utilities SDS RWPS Project Manager – Steve Duling
- MWH SDS RWPS Project Engineer Matthew Schultz
- US Bureau of Reclamation Natural Resource Specialist – Tara Piper
- Lake Pueblo State Park Manager – Brad Henley
- Pueblo County Department of Planning & Development Director Julie Ann Woods
- Pueblo County Department of Engineering & Public Works Director Bob Schmidt

### Agenda:

- Introductions
- Juniper Pump Station (JPS) architectural history
- Review Juniper Pump Station architecture
- Next steps
- Juniper Pump Station site visit

**Attachment B = Images Reviewed During Meeting**



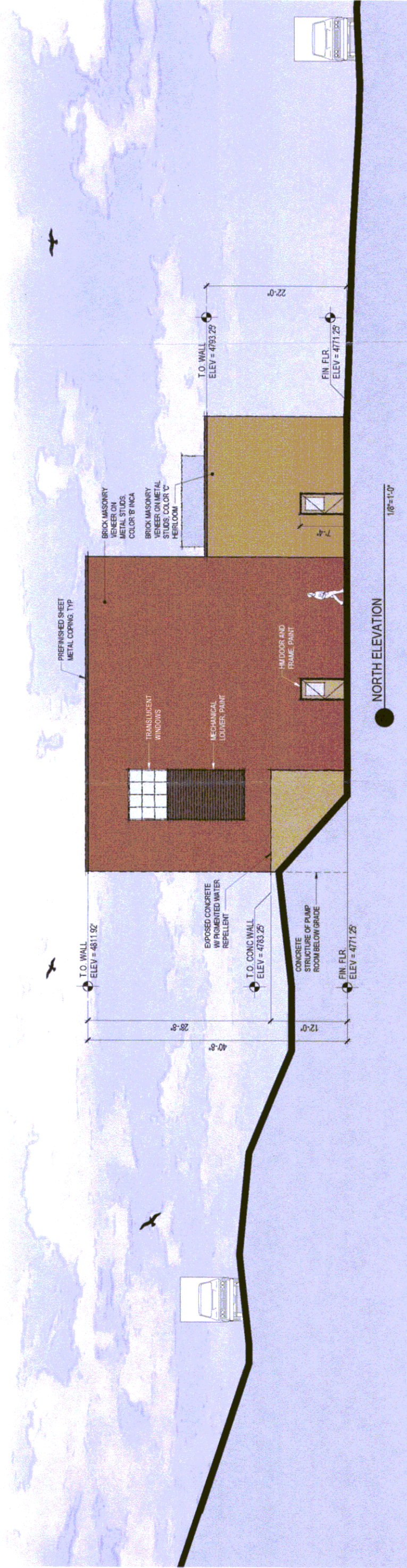
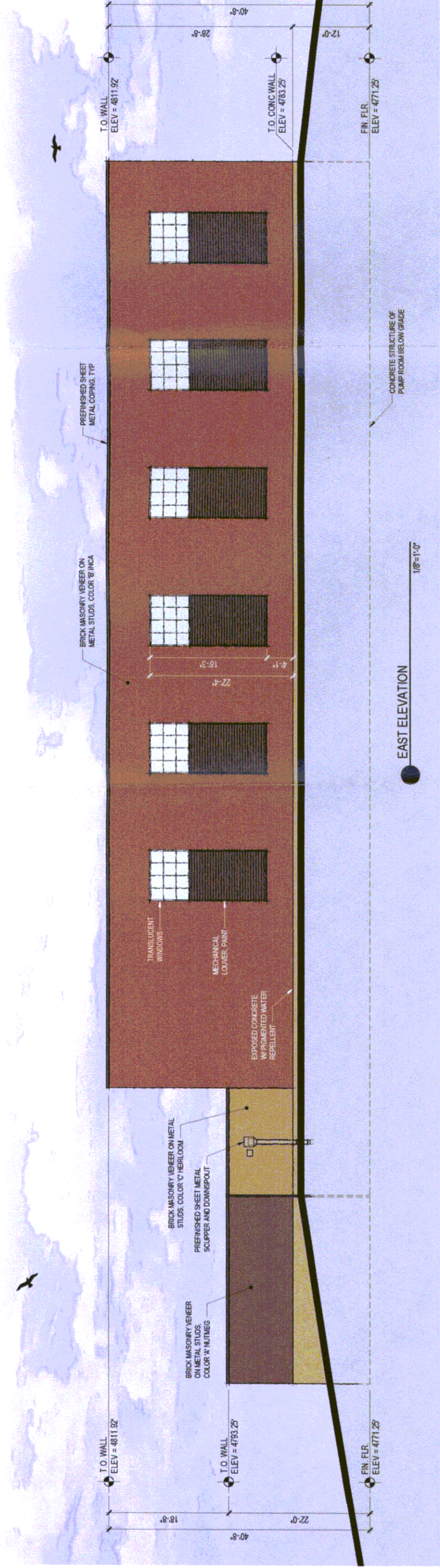


# COLORADO SPRINGS UTILITIES – JUNIPER PUMP STATION

SHORT AND BRENNAN ARCHITECTS \ ATKINSON DESIGN GROUP – LANDSCAPE ARCHITECT \ CDM SMITH

**SEPTEMBER 2012**





# COLORADO SPRINGS UTILITIES – JUNIPER PUMP STATION

SHORT AND BRENNAN ARCHITECTS \ ATKINSON DESIGN GROUP – LANDSCAPE ARCHITECT \ CDM SMITH SEPTEMBER 2012





**Juniper Pump Station Photo Locations**

Southern Delivery System  
Pueblo, Colorado



Juniper Pump Station  
Artistic Composite from the Northwest (Photo Location 1)  
CDM Smith, September 2012





Juniper Pump Station  
Artistic Composite from the North (Photo Location 2)  
CDM Smith, September 2012





Juniper Pump Station  
Artistic Composite from the East (Photo Location 3)  
CDM Smith, September 2012





Juniper Pump Station  
Artistic Composite from the South (Photo Location 4)  
CDM Smith, September 2012





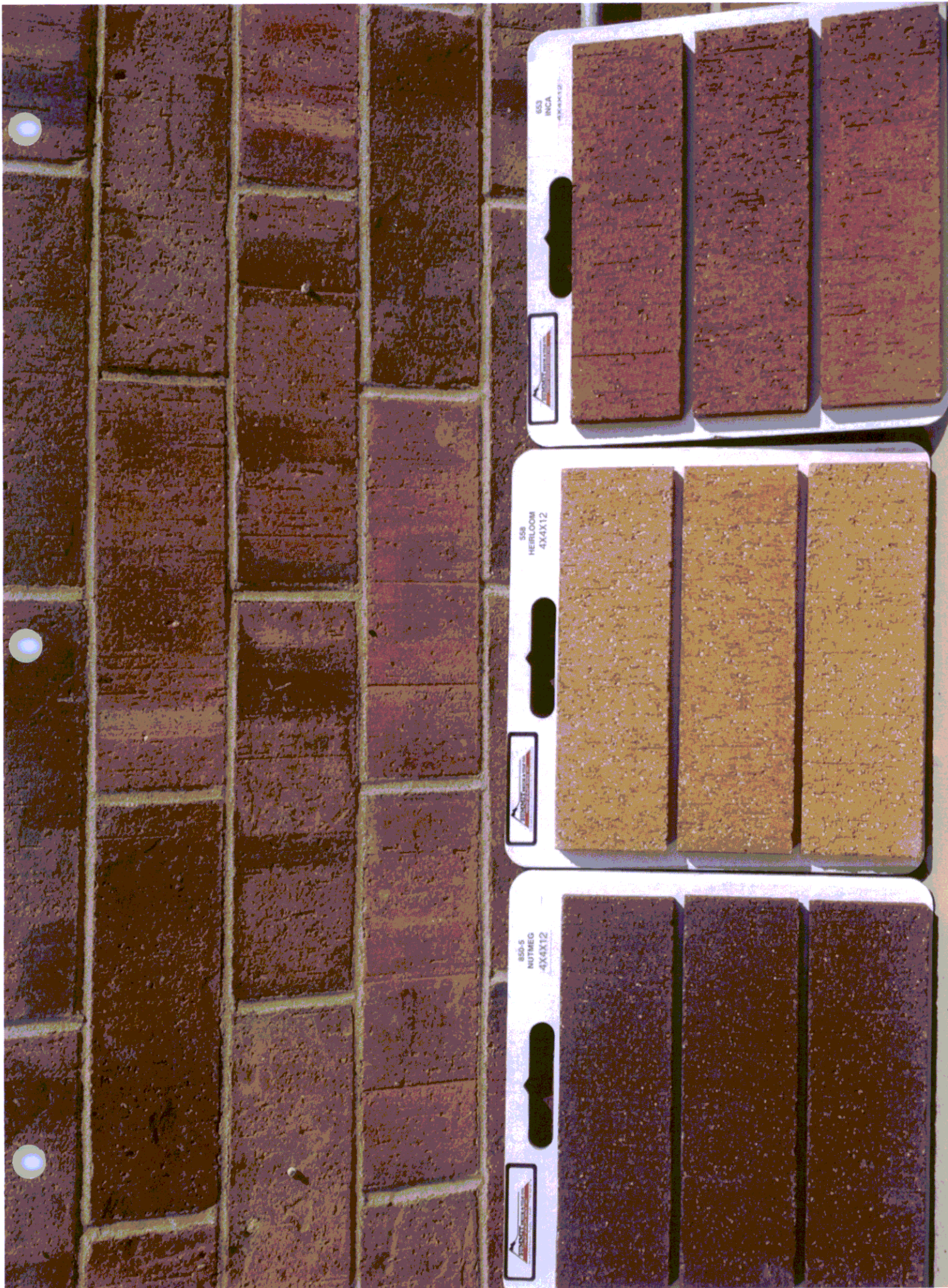
Juniper Pump Station  
Artistic Composite from the South (Photo Location 5)  
CDM Smith, September 2012





Attachment C → Images of Brick Samples Outside  
Lake Pueblo State Park Visitors Center





653  
INCA



558  
HEIRLOOM  
4X4X12



850-5  
NUTMEG  
4X4X12





