

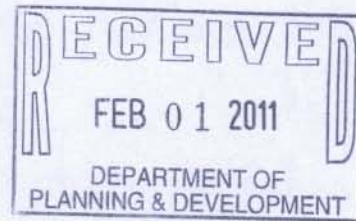


## Colorado Springs Utilities

*It's how we're all connected*

January 28, 2011

Michael J. Ryan  
Regional Director  
Great Plains Regional Office  
Bureau of Reclamation  
P.O. Box 36900  
Billings, MT 59107-6900



**Subject:** Southern Delivery System Permit Compliance Annual Report (Calendar Year 2010)

Mr. Ryan:

Colorado Springs Utilities, the Southern Delivery System (SDS) Project Manager, is submitting the attached Permit Compliance Annual Report for Calendar Year 2010. Submittal of this report demonstrates the SDS Project's progress to successfully implement the commitments as prescribed in the SDS ROD, Reference No.: GP-2009-01.

Please contact me at 719-668-8037, or Allison Mosser at 719-668-8667, with any questions regarding the attached report.

Sincerely,

John A. Fredell  
Southern Delivery System Program Director

Enclosure

- c: City of Fountain, Larry Patterson, Utilities Director  
Colorado Department of Public Health and Environment, Steven Gunderson, Director,  
Water Quality Control Division  
Colorado Division of Wildlife, Dan Prenzlowl, Regional Manager, Southeast Region  
Fountain Creek Watershed Flood Control and Greenway District, Jeff Chostner, Chair  
Pueblo County Planning & Development, **Kim B. Headley**, Director  
Pueblo West Metropolitan District, Steve Harrison, Director of Utilities  
Security Water and Sanitation District, Roy Heald, District Manager  
U.S. Army Corps of Engineers, Jason D. Williams, Lieutenant Colonel, U.S. Army, District  
Commander

121 South Tejon Street, Third Floor  
P.O. Box 1103, Mail Code 930  
Colorado Springs, CO 80947-0930

Phone 719/668-4800  
Fax 719/668-8734  
<http://www.csu.org>

# **Southern Delivery System Permit Compliance Annual Report Calendar Year 2010**

Prepared for:

**Bureau of Reclamation**

**Colorado Department of Public Health and  
Environment**

**Colorado Division of Wildlife**

**El Paso County**

**Pueblo County**

**Fountain Creek Watershed Flood Control and  
Greenway District**

Submitted by:

**Colorado Springs Utilities, SDS Project Manager  
on behalf of the SDS Participants**

January 2011

# Contents

---

Section	Page
Contents.....	i
Acronyms and Abbreviations .....	ii
Executive Summary.....	ES-1
Purpose .....	ES-1
Reporting Requirements.....	ES-2
Summary of SDS Activities During this Reporting Period .....	ES-2
<b>1.0 Introduction.....</b>	<b>1-1</b>
1.1 Purpose .....	1-1
1.2 Southern Delivery System Project Overview .....	1-2
1.3 Project Participant Information .....	1-4
1.3.1 SDS Participants .....	1-4
1.4 Southern Delivery System Project Regulatory Review Process.....	1-4
<b>2.0 Listing of Permit Compliance Reporting Requirements for SDS.....</b>	<b>2-1</b>
<b>3.0 Summary of SDS Activities Undertaken During the Reporting Period.....</b>	<b>3-1</b>
<b>4.0 References .....</b>	<b>4-1</b>

## Figures

- 1 Southern Delivery System Project Plan

## Attachments

- 1 Implementation Progress Matrix
- 2 Monthly Average Flow Data from USGS Gauge Station
- 3 Water Quality Monitoring Data
- 4 Complaint Log
- 5 Emergency Response Log
- 6 Log of Work Occurring During Non-Typical Work Hours

# Acronyms and Abbreviations

---

1041 Permit	Pueblo County 1041 Permit No. 2008-002
CDOW	Colorado Division of Wildlife
CDPHE	Colorado Department of Public Health and Environment
CWC	Colorado Wildlife Commission
CWCB	Colorado Water Conservation Board
EMS	Environmental Management System
FEIS	Final Environmental Impact Statement
FWMP	Fish and Wildlife Mitigation Plan
GMP	Geomorphic Mitigation Plan
IAMP	Integrated Adaptive Management Plan
mgd	million gallons per day
MP	Monitoring Plan
NEPA	National Environmental Policy Act
PCAR	Permit Compliance Annual Report
PDC	Pueblo Dam Connection
Reclamation	Bureau of Reclamation
ROD	Record of Decision
SCMP	Socioeconomic Construction Management Plan
SDS	Southern Delivery System Project
SDS Participants	City of Colorado Springs, City of Fountain, Security Water District, and Pueblo West Metropolitan District
USACE	United States Army Corps of Engineers
UWCR	Upper Williams Creek Reservoir
WCR	Williams Creek Reservoir
WTP	water treatment plant

# Executive Summary

---

The Southern Delivery System Project (SDS) is a proposed regional water delivery system that will serve the City of Colorado Springs (via Colorado Springs Utilities), City of Fountain, Security Water District, and Pueblo West Metropolitan District (collectively, the SDS Participants).

## Purpose

The purpose of the SDS Permit Compliance Annual Report (PCAR), submitted by Colorado Springs Utilities, the SDS Project Manager, is to demonstrate the progress to successfully implement the commitments as prescribed in the Record of Decision (ROD) to the Bureau of Reclamation (Reclamation). Colorado Springs Utilities also reviewed the other six programmatic permits/approvals that are in place to identify annual reporting requirements of each. The following four permits/approvals have annual reporting requirements addressed in this report:

- El Paso County Location Approvals
  - Planning Commission Resolution U-09-002, March 2, 2010, Southern Delivery System Raw Water Pipelines
  - Planning Commission Resolution U-09-003, March 2, 2010, Southern Delivery System Finished Water Pipelines
  - Planning Commission Resolution U-09-004, March 16, 2010, Southern Delivery System Bradley Pump Station
  - Planning Commission Resolution U-09-005, March 16, 2010, Southern Delivery System Upper Williams Creek Reservoir
  - Planning Commission Resolution U-09-007, March 16, 2010, Southern Delivery System Exchange Flow System
- Pueblo County Board of County Commissioners Resolution No. P&D 09-22 approving 1041 Permit No. 2008-02, April 21, 2009
- Fountain Creek Watershed, Flood Control and Greenway District (District) Resolution 2010-01, February 26, 2010
- Colorado Department of Public Health and Environment (CDPHE) 401 Certification No. 4224, April 23, 2010, which includes the requirement to provide copies of all other annual reports

The following two programmatic permits/approvals do not specifically include annual reporting requirements.

- Memorandum of Agreement with the State of Colorado, Department of Natural Resources on behalf of the Colorado Division of Wildlife regarding the Fish and Wildlife Mitigation Plan, May 18, 2010
- United States Army Corps of Engineers Clean Water Act Section 404 Individual Permit No. SPA-2005-00131-SCO, April 26, 2010

## Reporting Requirements

The ROD requires annual reporting to summarize the SDS Project's progress made in implementing the commitments. Colorado Springs Utilities has elected to develop one SDS PCAR that addresses the ROD commitments and the other annual or periodic reporting requirements included in the programmatic permits/approvals that are listed above. The first annual report for 2010 addresses all programmatic requirements comprehensively, and addresses all conditions regardless of whether there was applicable activity in this reporting period. This effort has been made to acknowledge and address all of the compliance items in the SDS permits and approvals. In future reports, only conditions that have applicable project activity will be in the report.

## Summary of SDS Activities During this Reporting Period

The SDS Project has met a number of key milestones during this reporting period to prepare for and begin the construction of SDS. These activities have included multiagency collaboration and coordination to meet these accomplishments. A detailed list of these activities is in Section 3.0 of this report. Colorado Springs Utilities has prepared the following documents per the commitments described in the ROD and other programmatic permits and agreements:

- Environmental Commitment Plan,
- Geomorphic Mitigation Plan,
- Integrated Adaptive Management Plan (IAMP),
- Monitoring Plan,
- Socioeconomic Construction Management Plan, and
- Cultural Resources Programmatic Agreement and Treatment Plan.

# 1.0 Introduction

---

## 1.1 Purpose

The purpose of the SDS Permit Compliance Annual Report (PCAR), submitted by Colorado Springs Utilities as SDS Project Manager, is to demonstrate the progress in successfully implementing the commitments as prescribed in the ROD (Reclamation 2009). This PCAR has been prepared to be consistent with the ROD and other permits issued by agencies having jurisdiction over SDS, specifically the following programmatic permits/approvals:

- Bureau of Reclamation Record of Decision for the Southern Delivery System Final Environmental Impact Statement, Record of Decision Reference No. GP-2009-01, March 20, 2009
- El Paso County Location Approvals
  - Planning Commission Resolution U-09-002, March 2, 2010, Southern Delivery System Raw Water Pipelines
  - Planning Commission Resolution U-09-003, March 2, 2010, Southern Delivery System Finished Water Pipelines
  - Planning Commission Resolution U-09-004, March 16, 2010, Southern Delivery System Bradley Pump Station
  - Planning Commission Resolution U-09-005, March 16, 2010, Southern Delivery System Upper Williams Creek Reservoir
  - Planning Commission Resolution U-09-007, March 16, 2010, Southern Delivery System Exchange Flow System
- Pueblo County Board of County Commissioners Resolution No. P&D 09-22 approving 1041 Permit No. 2008-02, April 21, 2009
- Fountain Creek Watershed, Flood Control and Greenway District (District) Resolution 2010-01, February 26, 2010
- Colorado Department of Public Health and Environment (CDPHE) 401 Certification No. 4224, April 23, 2010, which includes the requirement to provide copies of all other annual reports

Colorado Springs Utilities reviewed all seven of the programmatic permits/approvals that are in place to identify annual reporting requirements of each. The following two programmatic permits/approvals do not specifically include annual reporting requirements.

- Memorandum of Agreement with the State of Colorado, Department of Natural Resources on behalf of the Colorado Division of Wildlife regarding the Fish and Wildlife Mitigation Plan, May 18, 2010

- United States Army Corps of Engineers Clean Water Act Section 404 Individual Permit No. SPA-2005-00131-SCO, April 26, 2010

Colorado Springs Utilities prepared an Environmental Commitment Plan and developed a Phase I Environmental Management System (EMS) to track compliance with the commitments associated with all of the programmatic permits/approvals.

## 1.2 Southern Delivery System Project Overview

SDS is a proposed regional water delivery project that will serve the City of Colorado Springs (via Colorado Springs Utilities), City of Fountain, Security Water District, and Pueblo West Metropolitan District (collectively, the SDS Participants).

The first phase of SDS includes construction of the following facilities:

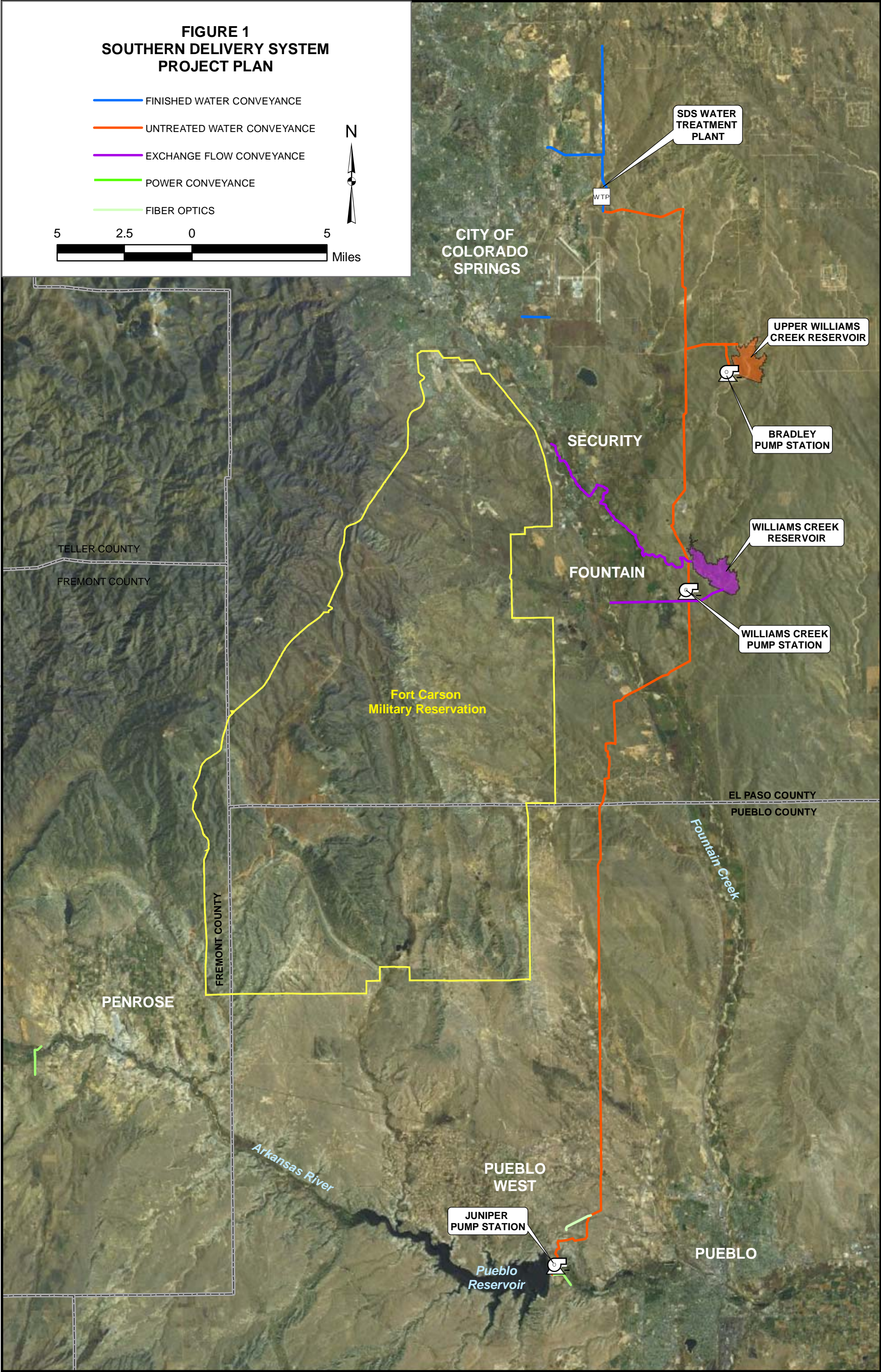
- A 53-mile raw water pipeline (66- and 72-inch diameter)
- Two 78-million-gallon-per-day (mgd) raw water pump stations and one 50-mgd raw water pump station (expandable in Phase 2)
- A water treatment plant (WTP) with a capacity of 50 mgd (expandable in Phase 2)
- Nine miles of 24- to 54-inch-diameter finished water pipelines

Phase 2 of SDS includes the following:

- A 30,500 acre-feet terminal storage reservoir on upper Williams Creek, called Upper Williams Creek Reservoir (UWCR)
- Expansion of the 50-mgd raw water pump station and WTP to 100-mgd capacity
- Expansion of the treated water delivery system
- A 28,000 acre-feet exchange storage reservoir on Williams Creek called Williams Creek Reservoir and exchange conveyance facilities to transfer exchange water to and from Fountain Creek

The SDS facilities are shown on Figure 1.







## 1.3 SDS Participant Information

Contact details for the SDS Participants and their authorized agent are as follows.

### 1.3.1 SDS Participants

#### Colorado Springs Utilities

(Authorized agent acting on behalf of Participants)

Contact: John Fredell, SDS Program Director  
Plaza of the Rockies, Third Floor  
121 S. Tejon, MC930  
Colorado Springs, CO 80947  
Phone: (719) 668-8037; Fax: (719) 668-8734  
E-mail: jfredell@csu.org

#### Security Water District (Participant)

Contact: Roy Heald, District Manager  
231 Security Blvd.  
Security, CO 80911  
Phone: (719) 392-3475; Fax: (719) 390-7252  
E-mail: r.heald@securitywsd.com

#### City of Fountain (Participant)

Contact: Larry Patterson, Director of Utilities  
116 S. Main St.  
Fountain, CO 80817  
Phone: (719) 322-2076; Fax: (719) 391-0463  
E-mail: lpatterson@fountaincolorado.org

#### Pueblo West Metropolitan District (Participant)

Contact: Steve Harrison, Utilities Director  
109 E. Industrial Blvd.  
Pueblo West, CO 80017  
Phone: (719) 547-3554; Fax: (719) 547-2833  
E-mail: sharrison@pmwd-co.us

## 1.4 Southern Delivery System Project Regulatory Review Process

SDS has undergone, and continues to undergo, significant regulatory oversight at the federal, state, and local levels. At the federal level, Reclamation has performed extensive and detailed environmental studies as a part of the National Environmental Policy Act (NEPA) process, the culmination of which was a Final Environmental Impact Statement (FEIS) and ROD.

The ROD for SDS was issued on March 20, 2009. It identified SDS shown in Figure 1-1 as the Preferred Alternative. SDS has been determined to cause “the least damage to the biological and physical environment” (Reclamation 2009). The ROD included extensive commitments by the SDS Participants to significant, long-term mitigation measures.

SDS crosses wetlands and other waters of the United States that require a permit from the United States Army Corps of Engineers (USACE) under the dredged and fill material permit program established under Section 404 of the federal Clean Water Act. A Section 404 Permit was received for SDS on April 26, 2010. Colorado Springs Utilities will develop new wetlands as compensatory mitigation for the Section 404 Permit and will provide copies of the mitigation plans to the Fountain Creek Watershed, Flood Control, and Greenway District for review.

At the state level, SDS received a 401 Certification from the Colorado Department of Public Health and Environment (CDPHE) on April 23, 2010, as required by Section 401 of the Clean Water Act for all individual Section 404 permitted activity. The Colorado Division of Wildlife (CDOW) also reviewed SDS, and an SDS Fish and Wildlife Mitigation Plan (FWMP) was prepared collaboratively with CDOW staff and approved by both the Colorado Wildlife Commission (CWC) and the Colorado Water Conservation Board (CWCB) (Colorado Springs Utilities, City of Fountain, Security Water District, Pueblo West Metropolitan District, and Colorado Division of Wildlife 2010a). A Memorandum of Understanding implementing the FWMP was executed with the CDOW on May 18, 2010.

At the county and city levels, SDS is subject to a variety of regulatory reviews and associated mitigations, including the following:

- Pueblo County 1041 Permit (No. 2008-002),
- El Paso County Location Approval and Site Development Plan processes, and
- Review by the Fountain Creek Watershed, Flood Control, and Greenway District (District).

Collectively, these permit conditions include comprehensive and extensive mitigation requirements, which are detailed in the respective resolutions of approval.

## 2.0 Listing of Permit Compliance Reporting Requirements for SDS

---

A detailed and specific listing of the permit compliance reporting requirements for SDS for the seven programmatic permits and approvals received for SDS is provided in Attachment 1 – Implementation Progress Matrix.

The Implementation Progress Matrix contains:

- A listing of the environmental commitments for SDS with annual reporting requirements (columns 1 and 2).
- A description of SDS implementation progress towards compliance with each of the commitments (column 3).
- A field to show if additional documentation is included in an attachment to this report (column 4).

Supporting documentation listed in column 4 is provided in the following attachments:

- Attachment 2 - Monthly Average Flow Data from USGS Gauge Station
- Attachment 3 - Water Quality Monitoring Data
- Attachment 4 - Complaint Log
- Attachment 5 - Emergency Response Log
- Attachment 6 - Log of Work Occurring During Non-Typical Work Hours

## 3.0 Summary of SDS Activities Undertaken During the Reporting Period

---

A number of actions have been taken during this reporting period to prepare for and begin the construction of SDS. Some of the key milestones achieved during this reporting period include the following:

- February 26, 2010 –Fountain Creek Watershed, Flood Control and Greenway District Board adopted Resolution 2010-01 approving SDS.
- March 2, 2010 – El Paso County Planning Commission adopted Resolutions U-09-002 and U-09-0003 approving the SDS raw water and finished water pipelines, respectively.
- March 16, 2010 – El Paso County Planning Commission adopted Resolutions U-09-004, U-09-005 and U-09-007 approving the SDS Bradley Pump Station, Upper Williams Creek Reservoir and Exchange Flow System, respectively.
- April 23, 2010 – Obtained 401 Water Quality Certification No. 4224 for SDS from the Colorado Department of Public Health & Environment.
- April 26, 2010 – Awarded the construction contract for the Finished Water 1A (FW1A) pipeline to Garney Construction for the amount of \$3.590 Million.
- April 26, 2010 – Obtained the Individual 404 Permit No. SPA-2005-00131-SCO for SDS from the U.S. Army Corps of Engineers.
- May 18, 2010 – Entered into a Memorandum of Agreement with the State of Colorado, Department of Natural Resources on behalf of the Colorado Division of Wildlife regarding the Fish and Wildlife Mitigation Plan
- June 7, 2010 - Awarded the Program Management contract to assist in managing, procuring, and constructing SDS to MWH.
- July 14, 2010 - Awarded the construction contract for the Pueblo Dam Connection to ASI Construction of Pueblo, Colorado for the amount of \$5.625 Million (construction anticipated to start early spring 2011).
- August 25, 2010 – Reached agreement with Reclamation on the contracts required to store, convey and exchange water using Pueblo Reservoir.
- September 1, 2010 – Received the fully executed Programmatic Agreement between Reclamation, Springs Utilities and the Colorado State Historic Preservation Officer regarding SDS.
- September 8, 2010 – Obtained Site Development Plan approval from El Paso County for the FW1A Work Package and started construction on FW1A.

- September 27, 2010 – Payment to Pueblo County in the amount of \$2.2 Million to fulfill the 1041 Permit No. 2008-002, Condition No. 8 obligation to complete dredging projects on Fountain Creek.
- October 20, 2010 – Submitted a Site Development Plan application to El Paso County for the raw water pipeline segment S4B/N1A.
- November 8, 2010 – Pre-qualified seven prime contractors to bid on upcoming raw water transmission pipeline construction projects (SOQ-AW-84432).
- November 17, 2010 – Submitted a Site Development Plan application to El Paso County for the raw water pipeline segment N1B.
- December 7, 2010 – Submitted concurrent applications to amend the Approval of Location for Williams Creek Pump Station to allow construction staging, and Site Development Plan approval for a construction staging area at the Williams Creek Pump Station.
- December 7, 2010 – Bids received for the raw water pipeline segment S4B/N1A construction contract.

In addition to the milestones listed above, Colorado Springs Utilities also began preparation of the following documents per the commitments described in the ROD and other programmatic permits and agreements:

- Environmental Commitment Plan,
- Geomorphic Mitigation Plan,
- Integrated Adaptive Management Plan (IAMP),
- Monitoring Plan,
- Socioeconomic Construction Management Plan, and
- Treatment Plan.

Colorado Springs Utilities made the following progress on several commitments which will be on-going through the construction and operation of SDS.

- Began procurement of design services for the wetland mitigation project required to offset the permanent impact of 0.23 acres of U.S. Army Corps of Engineers jurisdictional wetlands due to SDS. Construction of these wetlands is anticipated to commence in 2011.
- Began identification of a location for the wetland construction to mitigate the 12.3 acres of non-jurisdictional wetlands that will be impacted as a result of SDS.
- Implemented a Phase I EMS to track compliance with programmatic permit/approval commitments and construction permit requirements.
- Entered into a Joint Use Agreement with the U.S. Geological Survey regarding the implementation of the Monitoring Plan for SDS.
- Included permitting and compliance requirements in design drawings and specifications, as required.

Colorado Springs Utilities, or its selected contractors, also obtained a number of construction-related permits. The acquisition of these permits as well as the compliance with these permits is being tracked through the Phase I EMS.

## 4.0 References

---

- Bureau of Reclamation. 2008. Southern Delivery System Final Environmental Impact Statement. December.
- Bureau of Reclamation. 2009. Record of Decision for the Southern Delivery System Project Final Environmental Impact Statement. Record of Decision Reference No. GP-2009-01. Colorado Department of Public Health and Environment. 2010. Section 401 Water Quality Certification; Colorado 401 Certification No.: 4224; U.S. COE 404 Permit No.: SPA-1995-00131-SCO; Description: Southern Delivery System; Location: El Paso and Pueblo Counties; Watercourse: Arkansas River, Fountain Creek and tributaries; Designation: Reviewable (MA01, MA02, MA03, FO02a, FO02b); Use Protected: (FO04, LA01a, LA01b). April 23
- Colorado Springs Utilities, City of Fountain, Security Water District, Pueblo West Metropolitan District, and Colorado Division of Wildlife. 2010a. Southern Delivery System Fish and Wildlife Mitigation Plan. March 11.
- El Paso County. 2010. Planning Commission Resolution U-09-002. For the Approval of Location of the Southern Delivery System Raw Water Pipeline within the A-5 (Agricultural), PUD (Planned Unit Development), RR - 2.5 (Rural Residential) and RR-5 (Residential Rural) Zone District. March 2.
- El Paso County. 2010. Planning Commission Resolution U-09-003. For the Approval of Location of the Southern Delivery System Finished Water Pipeline within the PUD (Planned Unit Development) Zone District. March 2.
- El Paso County. 2010. Planning Commission Resolution U-09-004. For the Approval of Location of the Southern Delivery System Bradley Pump Station within the RR-5 (Residential Rural) Zone District. March 16.
- El Paso County. 2010. Planning Commission Resolution U-09-005. For the Approval of Location of the Upper Williams Creek Reservoir within the RR-5 (Residential Rural) Zone District. March 16.
- El Paso County. 2010. Planning Commission Resolution U-09-007. For the Approval of Location of the Exchange Flow System within the RR-5 (Residential Rural) Zone District. March 16.
- Fountain Creek Watershed, Flood Control, and Greenway District. 2010. Board of Directors Resolution 2010-01 - Land Use. A Resolution recommending that the El Paso County Planning Commission approve applications by Colorado Springs Utilities and on behalf of the Project Participants for location approvals for the Southern Delivery System located within the Fountain Creek Watershed Management Area and approving those portions of the Southern Delivery System located within the Fountain Creek Corridor. February 26.



Pueblo County. 2009. 1041 Permit No. 2008-002. The Board of County Commissioners of Pueblo County Colorado; A Resolution Approving 1041 Permit No.2008-002 With Terms and Conditions for Construction and Use of a Municipal Water Project Known as the Southern Delivery System within Pueblo County, Colorado. April 21.

State of Colorado. 2010. Memorandum of Agreement by and between the State of Colorado, acting by and through the Department of Natural Resources, for the use and benefit of the Division of Wildlife and Colorado Springs Utilities, acting as the Project Manager for the Southern Delivery System. May 18.

U.S. Army Corps of Engineers. 2010. Department of the Army Permit; Permittee: Colorado Springs Utilities; Permit No. SPA-2005-00131-SCO; Issuing Office: Albuquerque District, U.S. Army Corps of Engineers. April 26.

# Implementation Progress Matrix

---

ATTACHMENT 1

Implementation Progress Matrix

Reporting Requirements		CY2010 Annual Report Information	
Reference	Permit or Approval Document Requirement	Implementation Progress	Attachment Provided
<b>Bureau of Reclamation - Record of Decision</b>			
<b>Environmental Commitments</b>			
p. 11, ¶1	Such contracts will, at a minimum, include a requirement for the SDS Participants to submit to Reclamation an annual compliance report that certifies progress in successfully implementing these commitments in a timely manner as prescribed in this ROD and any contracts.	This Permit Compliance Annual Report is being prepared to demonstrate the progress in successfully implementing the commitments as prescribed in the ROD and the annual reporting requirements found in the other programmatic permits and approvals including: the Pueblo County 1041 Permit, the El Paso County Location Approvals, the CDPHE 401 Water Quality Certification and the Fountain Creek Watershed, Flood Control and Greenway District approval.	No
p. 11, ¶2	The Participants must obtain other significant Federal, State, and local permits, approvals, and agreements for the SDS Project.	The programmatic permits for the Southern Delivery System (SDS) are in place. The selected construction contractors are required through the contract documents to submit copies of all permits acquired. The SDS Participants are tracking the permit acquisition progress for each of the work packages as construction activities commence.	No
p. 11, ¶3	A detailed and specific list of environmental commitments and plan for their implementation will emerge from this coordination process.  The timing of this process is important. Coordination of implementation of the environmental commitment plan will occur prior to executing any contracts for the SDS Project.	An Environmental Commitment Plan has been completed and will be submitted to the Bureau of Reclamation before the contracts are finalized.	No
<b>Participants' Commitments: General Commitments</b>			
p. 12, Bullet 1	Comply with all applicable permits, regulations, and laws including but not limited to CDPHE, USCOE 404, and local land use permits obtained for the SDS Project.	Compliance with permit and regulatory requirements is being tracked through the implementation of an Environmental Management System (EMS). In addition, the construction contract documents for each of the work packages include permit and regulatory compliance requirements.	No
p. 12, Bullet 2	Construct and operate the SDS Project in a manner that does not differ substantially from that evaluated in this FEIS, except under emergency conditions, and unless additional and appropriate environmental investigations are completed by Reclamation and approval is then given to Participants to alter construction or operation of the SDS Project.	The SDS Participants intend to construct and operate the preferred alternative that was identified in the FEIS. The construction of the project commenced in this reporting period with the award of the construction contract for the Pueblo Dam Connection (construction activities not anticipated to start until Spring 2011). One segment of the finished water pipeline (FW1A) commenced construction in September, 2010. The procurement process for one of the raw water pipeline packages, S4B/N1A, began in this reporting period as well.	No

ATTACHMENT 1

Implementation Progress Matrix

Reporting Requirements		CY2010 Annual Report Information	
Reference	Permit or Approval Document Requirement	Implementation Progress	Attachment Provided
p. 12, Bullet 3	Develop and implement a head pressure monitoring program on the Joint Use Manifold to isolate effects attributable to the SDS Project and to mitigate those effects if they were to occur. This program will be developed over a 3-year period from the date that water is first delivered from the Joint Use Manifold for the SDS project. Development of the monitoring program will include involvement of all other Joint Use Manifold users.	This commitment is no longer applicable to SDS. The Joint Use Manifold will not be used with the construction of the Pueblo Dam Connection at the North Outlet Works.	No
p. 12, Bullet 4	Develop an integrated adaptive management program for the project that will be coordinated with the Participants' existing monitoring programs and the Environmental Management System discussed in Appendix F of the FEIS. The integrated adaptive management program will be finalized prior to executing any contracts for the SDS project.	An Integrated Adaptive Management Plan (IAMP) has been developed and will be submitted to the Bureau of Reclamation before the contracts are finalized. The requirements of the IAMP will be coordinated with the development of the Phase II EMS that Colorado Springs Utilities will begin developing in the next reporting period. The requirements of the IAMP are not effective until SDS is operational.	No
<b>Participants' Commitments: Surface Water</b>			
p. 12, Bullet 1	Comply with the Upper Arkansas Voluntary Flow Management Program except during emergency conditions as defined in Section 2.b. of the Memorandum Of Understanding for Settlement of Case No. 04CW129, Water Division 2 (Chaffee County Recreation In-Channel Diversion).	The SDS Participants will follow the Upper Arkansas Voluntary Flow Management Program.	No
p. 13, Bullet 2	Comply with the Pueblo Flow Management Program pursuant to existing intergovernmental agreements. If Reclamation and the Participants receive credible information that project operations are impairing physical diversion of a senior water right, contrary to Colorado water law, the Participants will immediately initiate discussions among the parties, including the party alleging the impairment of Reclamation, to develop a solution and remedy the impairment in compliance with Colorado water law.	The SDS Participants will follow the Pueblo Flow Management Program.	No
p. 13, Bullet 3	Participants will consult with Reclamation each year on the average annual flow in Fountain Creek. If the average annual stream flow of Fountain Creek as measured at Pueblo (USGS gauge station number 07106500) exceeds the scope and range of the flow estimated and analyzed in the Final Environmental Impact Statement (see Table 33 of the FEIS), then Participants will coordinate with Reclamation, within their adaptive management plan, to evaluate the cause(s) for the change in flows and determine whether appropriate response actions, such as monitoring and/or mitigation measures, are warranted. Each year, Participants will report to Reclamation the average annual flow in Fountain Creek at Pueblo together with other relevant data.	The average annual flow during this reporting period in Fountain Creek as measured at USGS gauge station number 07106500 was approximately 131.8 cubic feet per second (cfs). Table 33 of the FEIS reported the existing condition average annual simulated streamflow at this location as 188 cfs. As construction of the Southern Delivery System project started during this reporting period, no flows have been introduced to Fountain Creek as a result of this project. See Attachment 2 for the monthly average flow data from USGS Gauge Station Number 07106500.	Attachment 2 - Monthly Average Flow Data from USGS Gauge Station Number 07106500

ATTACHMENT 1

Implementation Progress Matrix

Reporting Requirements		CY2010 Annual Report Information	
Reference	Permit or Approval Document Requirement	Implementation Progress	Attachment Provided
p. 13, ¶1	Surface water mitigation measures will resolve adverse effects to physical diversions of senior water rights.	This requirement is a summary statement of the specific surface water mitigation measures described in the three bullets listed above. The SDS Participants are implementing the surface water mitigation measures per the Upper Arkansas Voluntary Flow Management Program and the Pueblo Flow Management Program.	No
<b>Participants' Commitments: Water Quality</b>			
p. 13, Bullet 1	Include water quality monitoring and adaptive management within the integrated adaptive management program (see Participants' General Commitments).	The Monitoring Plan has been completed and will be submitted to the Bureau of Reclamation before the contracts are finalized.	No
p. 13, Bullet 2	Begin implementing water quality monitoring when construction of the project begins. This will allow about three years of baseline data to be collected before project operations begin.	Colorado Springs Utilities has been coordinating with the U.S. Geologic Survey (USGS) on the water quality monitoring program. Water quality monitoring is anticipated to begin January 2011.	No
p. 13, Bullet 3	Submit water quality monitoring data, including trend analyses, for the preceding calendar year to Reclamation by January 31st of the subsequent year.	A Joint Funding Agreement has been executed with the U.S. Geological Survey (USGS) on the water quality monitoring program. Water quality monitoring will begin in January, 2011. See Attachment 3 for the water quality monitoring data.	Attachment 3 - Water Quality Monitoring Data (no data collected for this reporting period)
p. 13, Bullet 4	If the Colorado Department of Public Health and Environment (CDPHE) determines that operation of the SDS Project is causing significant adverse water quality effects, the Participants will coordinate with Reclamation, CDPHE, and other interested parties to evaluate and select measures to mitigate adverse effects.	This requirement is not applicable yet as SDS is under construction and not operational at this time.	No
p. 13, Bullet 5	In the event that operation of the SDS Project causes, or threatens to cause, stream flows in the Arkansas River or other waterways to diminish to low levels that will contribute significantly to elevated concentrations/densities of dissolved selenium, <i>E. coli</i> , or sulfate, the Participants will coordinate with Reclamation, CDPHE, CDOW, and other interested parties to evaluate and select measures to mitigate adverse effects.	This requirement is not applicable yet as SDS is under construction and not operational at this time.	No

ATTACHMENT 1

Implementation Progress Matrix

Reporting Requirements		CY2010 Annual Report Information	
Reference	Permit or Approval Document Requirement	Implementation Progress	Attachment Provided
p. 13, ¶1	Development and implementation of a water quality monitoring and adaptive management plan will provide a means of detecting changes in water quality, judging whether they are likely caused by operation of the SDS Project, and addressing actual effects in a systematic manner. Additionally, implementation of the geomorphology mitigation measures (below) will reduce suspended sediment and total recoverable iron concentrations in Fountain Creek and the lower Arkansas River.	This requirement is a summary statement of the specific water quality commitments described in the five bullets listed above. The Monitoring Plan, Geomorphic Mitigation Plan and IAMP have been completed. These plans will be submitted to the Bureau of Reclamation before the contracts are finalized. The plans will be implemented during the construction and operation of the SDS in accordance with this commitment.	No
<b>Participants' Commitments: Geomorphology</b>			
p. 14, Bullet 1	<p>Prepare a geomorphic mitigation plan and secure Reclamation approval prior to executing any contracts for the SDS Project. This plan could include, but is not limited to:</p> <ul style="list-style-type: none"> <li>• Evaluate and consider strategies to remove sediments that reduce the effectiveness of Corps levees located near Fountain Creek at its confluence with the Arkansas River</li> <li>• Evaluate and consider strategies to increase the sinuosity of Fountain Creek at appropriate locations in order to reduce undesirable erosion and sedimentation</li> <li>• Evaluate and consider strategies at appropriate locations along Fountain Creek to reduce undesirable erosion and sedimentation</li> <li>• Select geomorphic mitigation measures for SDS Project effects that are, to the extent practicable, consistent with priority projects identified in the Corps of Engineers' Fountain Creek Watershed Study and the Fountain Creek Corridor Master Plan. Locations where geomorphic mitigation projects could occur include, but are not limited to: <ul style="list-style-type: none"> <li>• Fountain Creek at the Clear Spring Ranch site, directly upstream and downstream of the confluence of Little Fountain Creek and Fountain Creek (approximately 4 miles)</li> <li>• Fountain Creek from upstream of Fountain Boulevard to upstream of Colorado 85/87 at the Sand Creek confluence (approximately 3 miles)</li> </ul> </li> </ul>	A Geomorphic Mitigation Plan was completed and will be submitted to the Bureau of Reclamation before the contracts are finalized. The intent of the Geomorphic Mitigation Plan is to begin data collection on or about October 15 following the start of project construction, or October 15 three years prior to the SDS commencing operations, whichever is later. Construction activities are not anticipated to be complete until 2016, therefore the monitoring will commence no later than the 2013 reporting period.	No
p. 14, Bullet 2	Complete pre-project geomorphic mitigation, including channel stabilization projects and non-structural options such as conservation easements, before the project is operational. Channel stabilization could include, but is not limited to, increasing stream sinuosity, flattening of steep side slopes, installation of grade control structures and use of buried riprap, erosion blankets, and/or vegetative cover for channel stabilization in areas of high and/or erosive velocities.	The SDS Participants have coordinated extensively with Pueblo County regarding the scope of a Fountain Creek dredging project. On August 30, 2010 an agreement was reached by which the SDS Participants will provide approximately \$2.2 million in funding to Pueblo County for the Fountain Creek dredging project. The SDS Participants made this payment to Pueblo County on September 27, 2010.	No
p. 14, Bullet 3	Design and construct an energy dissipation structure that will protect against erosion at the outlet of the pipeline from Williams Creek Reservoir to Fountain Creek.	The design of the Williams Creek Reservoir is anticipated to begin in 2020 to 2025. An energy dissipation structure at the pipe outlet will be incorporated into the design.	No

ATTACHMENT 1

Implementation Progress Matrix

Reporting Requirements		CY2010 Annual Report Information	
Reference	Permit or Approval Document Requirement	Implementation Progress	Attachment Provided
p. 14, Bullet 4	Evaluate and implement appropriate future geomorphic stabilization projects, if such future projects are determined to be necessary after the project is operational.	This requirement is not applicable yet as SDS is under construction and not operational at this time.	No
p. 14, ¶1	When implemented, these recommendations will mitigate potential adverse effects on geomorphology by avoiding or minimizing effects of return flow discharges through an energy dissipation structure, compensating for anticipated effects, and responding to effects identified after project operations begin.	This requirement is a summary statement of the specific water quality commitments described in the five bullets listed above. A Geomorphic Mitigation Plan has been completed and will be implemented during the construction and operation of SDS in accordance with this commitment.	No
<b>Participants' Commitments: Aquatic Life</b>			
p. 15, Bullet 1	Submit a proposed wildlife mitigation plan to the Colorado Wildlife Commission (Wildlife Commission) pursuant to C.R.S. 37-60-122.2. This proposal will include actions the Participants propose to mitigate impacts that the SDS Project may have on fish and wildlife. As required by that statute, the Wildlife Commission will evaluate the probable impact of the project on fish and wildlife and, if the Participants and Wildlife Commission cannot agree upon reasonable mitigation, the Wildlife Commission will make recommendations to the Colorado Water Conservation Board (CWCB) regarding what it believes to be reasonable mitigation actions. If the Participants and the Wildlife Commission agree on a mitigation plan, the Wildlife Commission will submit that agreement to the CWCB, which must adopt the agreement as the state's official position. If the Participants and the Wildlife Commission do not reach agreement on a mitigation plan, the CWCB will consider the plan submitted by the Participants and the recommendations of the Wildlife Commission, which then becomes the State's official position, or submit its own recommendations to the Governor, who will ultimately determine the state's official position on the proposed wildlife mitigation plan.	A Wildlife Mitigation Plan was developed in cooperation with the Colorado Division of Wildlife, which was then submitted to the Colorado Wildlife Commission pursuant to C.R.S. 37-60-122.2. The Colorado Wildlife Commission approved the Wildlife Mitigation Plan and the Colorado Water Conservation Board adopted it. A Memorandum of Agreement between the SDS Participants and the Colorado Department of Natural Resources, on behalf of the Colorado Division of Wildlife, was executed May 18, 2010.	No
p. 15, Bullet 2	In the event that the operation of the SDS Project causes, or threatens to cause, stream flows in Fountain Creek or the Arkansas River to diminish to low levels that could contribute significantly to impairment of aquatic life, coordinate with Reclamation, CDPHE, CDOW and other interested parties to evaluate and select measures to mitigate adverse effects.	This requirement is not applicable yet as SDS is under construction and not operational at this time.	No



ATTACHMENT 1

Implementation Progress Matrix

Reporting Requirements		CY2010 Annual Report Information	
Reference	Permit or Approval Document Requirement	Implementation Progress	Attachment Provided
p. 15, Bullet 3	Evaluate and consider participation in CDOW fish hatchery programs.	The Memorandum of Agreement between the SDS Participants and the Colorado Department of Natural Resources, on behalf of the Colorado Division of Wildlife (CDOW), includes a commitment that Colorado Springs Utilities will either construct 7.5 acres of fish rearing ponds for warm water species or provide \$7.5M in funding to CDOW for this construction. The MOA stipulates that construction of four (4) acres of these ponds shall be completed no later than three years prior to the date Upper Williams Creek Reservoir is placed in service. The construction of the remaining 3.5 acres of rearing ponds shall be completed no later than five (5) years after Upper Williams Creek Reservoir is in service.	No
p. 15, Bullet 4	Monitor the effects of the operation of the SDS Project upon aquatic life in Fountain Creek and the Arkansas River between Pueblo Dam and the Las Animas Gage. Aquatic sampling will be conducted once per year at up to 10 locations. Monitoring methods and locations will be identified in the proposed wildlife mitigation plan that will be submitted to the Colorado Wildlife Commission pursuant to C.R.S. 37-60-122.2. Use the information from this monitoring in the adaptive management program for the SDS Project.	This requirement is not applicable yet as SDS is under construction and not operational at this time.	No
p. 15, ¶1	When implemented, these recommendations will mitigate potential adverse effects on aquatic life by avoiding or minimizing effects, compensating for anticipated effects, and detecting and responding to effects identified after project operations begin.	This requirement is a summary statement of the specific aquatic life commitments described in the four bullets listed above. The SDS Participants will implement the Fish & Wildlife Mitigation Plan as well as the agreements from the MOA with the Colorado Department of Natural Resources during the construction and operation of SDS.	No
<b>Participants' Commitments: Wetlands, Waters, and Riparian Vegetation</b>			
p. 15, Bullet 1	Design final alignments and facilities to avoid and minimize wetland impacts.	The pipeline alignments and facilities are designed in accordance with the information that was submitted and approved by the U.S. Army Corps of Engineers with the individual 404 permit application for SDS. The requirements of the 404 permit are included into the construction contract document for each work package, as applicable.	No
p. 15, Bullet 2	Assess alternative construction methods for pipeline crossings (i.e., directional drilling v. open cut) to minimize wetland and stream impacts.	Alternative construction methods for pipeline crossings were considered during the development of the individual 404 permit application for the SDS. The final design of pipeline crossings is in accordance with the information provided in the individual 404 permit where impacts to jurisdictional waters were described.	No



# ATTACHMENT 1

## Implementation Progress Matrix

Reporting Requirements		CY2010 Annual Report Information	
Reference	Permit or Approval Document Requirement	Implementation Progress	Attachment Provided
p. 16, Bullet 3	Mitigate impacts to jurisdictional and non-jurisdictional wetlands in areas of temporary, short-term effects such as pipeline crossings, on-site at the place of disturbance with similar wetlands and soils to replace existing wetland functions and values.	The construction contract documents for each work package, as applicable, includes the 404 permit Nationwide Permit (NWP) 12 requirements for all temporary, short-term effects to jurisdictional and non-jurisdictional wetlands. The impacts will be mitigated on-site through the implementation of the NWP 12 requirements.	No
p. 16, Bullet 4	Mitigate all unavoidable, permanent impacts to jurisdictional and non-jurisdictional wetlands with compensatory wetlands that replace existing wetland functions and values. Compensatory wetland mitigation will likely occur at the Clear Spring Ranch site on Fountain Creek downstream of the City of Fountain.	Colorado Springs Utilities procured engineering design services for the compensatory wetland mitigation project at the Clear Spring Ranch site. The SDS Participants anticipate presenting the final design for Reclamation and USACE review and approval in early 2011.	No
p. 16, Bullet 5	Control Tamarisk that may establish around newly constructed reservoirs.	This requirement is not applicable yet as no reservoir construction has commenced for SDS during this reporting period.	No
p. 16, Bullet 6	Evaluate and consider a strategy to increase the sinuosity of Fountain Creek at appropriate locations in order to create wetlands areas.	The SDS Participants will consider options to increase the sinuosity of Fountain Creek at the Clear Springs Ranch site in order to create wetland areas with the design of the compensatory wetland mitigation project.	No
p. 16, Bullet 7	Evaluate and consider the construction and maintenance of new areas of wetlands along Fountain Creek in order to participate in wetlands banking programs. Evaluate and consider cooperation with Colorado agencies to expand such a wetlands creation process.	The SDS Participants will coordinate with USACE during the review of the compensatory wetland mitigation project on opportunities to participate in wetlands banking programs. The SDS Participants will present the design to Colorado agencies to consider cooperation on the wetland creation.	No
p. 16, ¶1	Mitigation plans for jurisdictional and non-jurisdictional wetlands will be submitted for approval by the Corps of Engineers and Reclamation, respectively. All design and planning measures for wetlands, waters, and riparian vegetation will be completed before any contracts for the SDS Project.	Colorado Springs Utilities procured engineering design services for the compensatory wetland mitigation project at the Clear Spring Ranch site. It is anticipated that the final design will be presented for Reclamation and USACE review and approval in early 2011.	No
p. 16, ¶2	By reviewing the location of wetlands during final design, effects on wetlands can be avoided and minimized. Specifically, the pipeline construction corridors through wetlands will be reduced to the minimum width practicable. Similarly, construction methods that do not involve trenching through a wetland will avoid impacts. Wetlands mitigated in place and off-site will replace affected wetlands on a 1:1 ratio and will provide similar functions and values. The 404 permitting process is ongoing and the final off-site mitigation ration for jurisdictional wetlands for the 404 permit has not yet been determined.	This requirement is a summary statement of the specific wetlands, waters and riparian vegetation commitments described in the seven bullets listed above. The pipeline alignments and facilities are being designed in accordance with the information that was submitted and approved by the U.S. Army Corps of Engineers with the individual 404 permit application for SDS, as applicable. The requirements of the 404 permit are included into the construction contract document for each work package, as applicable.	No

ATTACHMENT 1

Implementation Progress Matrix

Reporting Requirements		CY2010 Annual Report Information	
Reference	Permit or Approval Document Requirement	Implementation Progress	Attachment Provided
<b>Participants' Commitments: Vegetation</b>			
p. 16, Bullet 1	Prior to final design, review locations of Needle and Thread grass -Blue Grama Grasslands, high quality shrublands and woodlands, and other areas with desirable vegetation to determine design changes within the current study area that will avoid and minimize impacts.	Pre-construction wildlife and vegetation surveys are being completed as part of the final design for each of the work packages. The results of these surveys are being incorporated into the construction contract documents as necessary.	No
p. 16, Bullet 2	Replace mature trees (diameter at breast height of 12 inches or greater) within construction areas at a 1:1 ratio with the same or similar native species with available nursery container stock or pole plantings as soon as practicable after construction activities have ended.	This commitment is being incorporated into the construction contract documents for each of the work packages, as applicable.	No
p. 16, Bullet 3	For 1 year after construction, monitor the construction areas to determine if appropriate native vegetation is establishing. If native vegetation is not establishing, the site will be reseeded with appropriate species.	This requirement is not applicable yet as SDS is under construction and not operational at this time.	No
p. 16, Bullet 4	In the appropriate season prior to construction, survey potential construction areas with known populations of dwarf milkweed and other plant species of concern, to locate areas where impacts can be avoided and minimized to the extent practicable with design changes within the current study area. After identifying populations to avoid, mark populations within or nearby the construction easement as environmentally sensitive so that workers avoid inadvertent impacts.	Pre-construction wildlife and vegetation surveys are being completed for each of the work packages. The results of these surveys are being incorporated into the construction contract documents as necessary.	No
p. 17, Bullet 5	During construction, wash major construction equipment before it enters the site so that noxious weeds are not spread from other construction sites.	This commitment is being incorporated into the construction contract documents for each of the work packages, as applicable.	No
p. 17, Bullet 6	Use certified weed-free mulch after seeding construction areas.	This commitment is being incorporated into the construction contract documents for each of the work packages, as applicable.	No
p. 17, Bullet 7	Reseed construction areas with comparable native vegetation as soon as practicable after disturbance, using seed that does not contain any noxious weed seed.	This commitment is being incorporated into the construction contract documents for each of the work packages, as applicable.	No
p. 17, Bullet 8	Monitor construction areas for 3 years after construction to assess if noxious weeds have invaded the site. If noxious weeds are present, weed control plans will be formulated and completed.	As part of the pre-construction vegetation surveys that are completed for each work package, a noxious weed survey is conducted. The noxious weed survey includes recommended weed control methods. This information is being incorporated into the contract documents. Monitoring of construction areas will continue for three years after construction to ensure that any necessary weed control is performed.	No

ATTACHMENT 1

Implementation Progress Matrix

Reporting Requirements		CY2010 Annual Report Information	
Reference	Permit or Approval Document Requirement	Implementation Progress	Attachment Provided
p. 17, Bullet 9	Because the project may indirectly increase the spread of tamarisk, the Participants will work with the Colorado Department of Agriculture's Colorado Noxious Weed Management Team on tamarisk issues in the Arkansas Valley including submitting a request for partnership evaluation.	This requirement is not applicable at this time as there were no design or construction activities for the Upper Williams Creek and Williams Creek Reservoirs.	No
p. 17, ¶1	Impacts to plant species and communities of concern and other sensitive vegetation areas can be avoided and minimized during final design and implementation. Because mitigation measures such as transplanting of individuals are often unsuccessful, avoidance and minimization will ensure survival, especially of plant species of concern. Seeding disturbed areas, replacing mature trees, and controlling noxious weeds will replace existing vegetation types and structural diversity and will ensure that high quality habitat remained.	As described in the previous nine responses, numerous measures are being implemented to minimize potential impacts to plant species and communities of concern and other sensitive vegetation areas.	No
<b>Participants' Commitments: Wildlife</b>			
p. 17, Bullet 1	Submit a proposed wildlife mitigation plan to Colorado Wildlife Commission pursuant to C.R.S. 37-60-1212.2 as described above.	A Wildlife Mitigation Plan was developed in cooperation with the Colorado Division of Wildlife , which was then submitted to the Colorado Wildlife Commission pursuant to C.R.S. 37-60-122.2. The Colorado Wildlife Commission approved the Wildlife Mitigation Plan and the Colorado Water Conservation Board adopted it. A Memorandum of Agreement between the SDS Participants and the Colorado Department of Natural Resources, on behalf of the Colorado Division of Wildlife was executed May 18, 2010.	No
p. 17, Bullet 2	Promptly revegetate all disturbed areas with native species that provide species diversity and food and cover for large game and wildlife habitat.	This commitment is being incorporated into the construction contract documents for each of the work packages, as applicable.	No
p. 17, Bullet 3	Conduct clearance surveys in suitable habitat for state-listed species following standard protocols, as available, prior to construction (e.g., CDOW undated).	The SDS Participants are completing pre-construction wildlife and vegetation surveys as part of the final design for each of the work packages. The results of these surveys are being incorporated into the construction contract documents as necessary.	No
p. 17, Bullet 4	Conduct raptor nest surveys prior to construction and impose seasonal restrictions to surface activity within recommended buffers (generally 1/4 to 1/2 mile) around active raptor nest sites and heron rookeries during construction.	Pre-construction raptor nest and heron rookery surveys are being completed for each of the work packages. The results of these surveys are being incorporated into the construction contract documents as necessary.	No

ATTACHMENT 1

Implementation Progress Matrix

Reporting Requirements		CY2010 Annual Report Information	
Reference	Permit or Approval Document Requirement	Implementation Progress	Attachment Provided
p. 17, Bullet 5	Consult with CDOW and U.S. Fish and Wildlife Services' Migratory Permit Bird Office to develop mitigation for unavoidable loss of raptor nests. Options may include constructing artificial nests in suitable habitat or enhancing prey habitat.	The following protocol will be used during construction of SDS: If an active nest is detected during the pre-construction raptor nest survey, Colorado Springs Utilities will coordinate with the construction contractor to ensure a buffer zone between the nest and the limit of construction is identified and the area avoided during the nesting season, or construction will be scheduled outside of the nesting season.	No
p. 17, Bullet 6	Develop construction schedules to avoid impacts to nesting migratory birds. If construction is scheduled to occur during the nesting season (April 1 through August 31) in areas where migratory birds may nest, a qualified biologist will conduct a nesting bird survey prior to the commencement of construction activities to determine the presence of migratory birds and their nests. If an active nest is detected, a buffer zone between the nest and the limit of construction will be flagged and avoided during the nesting season, or construction will be scheduled outside of the nesting season.	The following protocol will be used during construction of SDS: If an active nest is detected during the pre-construction raptor nest survey, Colorado Springs Utilities will coordinate with the construction contractor to ensure a buffer zone between the nest and the limit of construction is identified and the area avoided during the nesting season, or construction will be scheduled outside of the nesting season.	No
p. 18, Bullet 7	Conduct pre-construction surveys for swift fox den sites within appropriate habitat along the pipeline corridor and proposed reservoir sites. Avoid surface disturbance within 1/4 mile of active den sites while young are den-dependent (March 15 -June 15).	Pre-construction wildlife and vegetation surveys are being completed as part of the final design for each of the work packages. The results of these surveys are being incorporated into the construction contract documents as necessary.	No
p. 18, Bullet 8	Restrict pesticides for rodent control within swift fox overall range.	This commitment is being incorporated into the construction contract documents for each of the work packages, as applicable.	No
p. 18, Bullet 9	Mitigate impacts to state-listed amphibian species by avoiding, minimizing, and mitigating wetland effects as described above.	The 404 Individual Permit, the 404 Compensatory Wetland Mitigation Plan and the Fish and Wildlife Mitigation Plan will be followed.	No
p. 18, Bullet 10	Impose seasonal restrictions on construction to avoid sensitive large game winter habitat (from first large snowfall to summer green-up).	Pre-construction wildlife and vegetation surveys are being completed as part of the final design for each of the work packages. The results of these surveys are being incorporated into the construction contract documents as necessary.	No
p. 18, Bullet 11	Install wildlife crossovers (trench plugs) during pipeline construction with ramps on each side at a maximum of 1/4 mile intervals and at well-defined game trails.	This commitment is being incorporated into the construction contract documents for each of the work packages, as applicable.	No
p. 18, Bullet 12	Create additional nesting habitat or nest boxes in nearby trees for the Lewis' woodpecker when nest trees are destroyed.	Pre-construction wildlife and vegetation surveys are being completed as part of the final design for each of the work packages. The results of these surveys are being incorporated into the construction contract documents as necessary.	No

ATTACHMENT 1

Implementation Progress Matrix

Reporting Requirements		CY2010 Annual Report Information	
Reference	Permit or Approval Document Requirement	Implementation Progress	Attachment Provided
p. 18, ¶1	By replacing vegetation including structural diversity, the long-term effects on wildlife will be reduced by allowing wildlife to return to disturbed areas. Pre-construction surveys will identify wildlife use at the time of construction and allow for planning for avoidance and minimization. Imposing seasonal and/or daily restrictions on construction will enable wildlife to use important habitat, especially during breeding and other critical periods. Wildlife crossovers installed within the pipeline trench will facilitate wildlife passage and provide escape routes for wildlife trapped within the trench, thereby reducing mortality.	As described in the previous twelve responses, numerous measures are being implemented to minimize potential impacts to wildlife.	No
<b>Participants' Commitments: Recreation</b>			
p. 18, Bullet 1	During short-term construction activities that require trail closures of developed recreational trails, designate a safe and reasonable detour around the project site. Post signs directing trail users.	This commitment is being incorporated into the construction contract documents for each of the work packages, as applicable.	No
p. 18, Bullet 2	Work with the local municipality to establish alternate trails with consistent width, surfacing, and signage.	Colorado Springs Utilities is coordinating with affected local municipalities as needed to identify temporary alternate trails to be used or constructed during construction.	No
p. 18, Bullet 3	Within developed parks with temporary effects, commit to full reclamation of the impact area by replacing turf, irrigation systems, and other facilities that could be affected. Provide follow-up monitoring and maintenance for 1 year to ensure that reclamation efforts are successful.	There were no temporary effects to developed parks as a result of SDS construction this year. This commitment is being incorporated into the construction contract documents for each of the work packages, as applicable.	No
p. 18, Bullet 4	In developed park areas with permanent, above ground SDS Project facilities, reconfigure park facilities that will be directly affected and visually screen SDS Project facilities from other park uses with vegetation, berming or attractive fencing.	There were no permanent, above ground SDS Project facilities constructed in developed park areas during this reporting period.	No
p. 18, Bullet 5	Seek opportunities to enhance angling, boating, or other recreation opportunities at Lake Henry, Lake Meredith, and Holbrook Reservoir so that they are less vulnerable to water level fluctuations. Work with the CDOW to identify priority projects and include them in a proposed wildlife mitigation plan to the Colorado Wildlife Commission pursuant to C.R.S. 37-60-122.2 as above.	A Memorandum of Agreement between the SDS Participants and the Colorado Department of Natural Resources, on behalf of the Colorado Division of Wildlife, which adopted the Fish and Wildlife Mitigation Plan, was executed May 18, 2010.	No
p. 19, ¶1	The proposed mitigation measures will reduce the impact of project facility construction on trail users. They will also reduce the short- and long-term impacts of project facilities on park infrastructure, vegetation, aesthetics, and recreation experiences. Collaboration with the CDOW to enhance fishing and boating opportunities may result in such improvements to recreation at Lake Henry, Lake Meredith, and Holbrook Reservoir.	As described in the previous five responses, numerous measures are being implemented to minimize potential impacts to recreation opportunities.	No
<b>Participants' Commitments: Socioeconomics and Land Use</b>			
p. 19, Bullet 1	Acquire properties and easements through voluntary, willing participant agreements to the maximum extent practicable.	Colorado Springs is coordinating with individual landowners to acquire properties and easements through voluntary negotiations to the maximum extent practicable.	No

ATTACHMENT 1

Implementation Progress Matrix

Reporting Requirements		CY2010 Annual Report Information	
Reference	Permit or Approval Document Requirement	Implementation Progress	Attachment Provided
p. 19, Bullet 2	Develop a construction management plan to outline best management practices to minimize impacts to surrounding properties and submit plan to Reclamation for approval prior to construction.	A Socioeconomic Construction Management Plan has been completed and will be submitted to the Bureau of Reclamation before the contracts are finalized.	No
p. 19, ¶1	Adverse short-term effects on landowners with parcels that will contain SDS features will be offset through mutually agreed upon compensation. The land use mitigation measures will minimize disturbances to properties near the project during construction or minimize land use changes and conflicts.	A Socioeconomic Construction Management Plan has been completed and will be submitted to the Bureau of Reclamation before the contracts are finalized.	No
<b>Participants' Commitments: Cultural Resources</b>			
p. 19, Bullet 1	Comply with the requirements of the Programmatic Agreement between Reclamation, the ACHP, Colorado Springs, and the Colorado SHPO (Appendix I of the FEIS).	The requirements of the Programmatic Agreement are referenced or included in the construction contract documents for each work package.	No
p. 19, ¶1	Development of the project alternatives will result in impacts to non-renewable historic properties. As a result, it will be necessary to implement a mitigation plan in an effort to resolve any adverse effects. Mitigation may be accomplished through avoidance, implementation of protective measures, or data recovery. If avoidance and preservation are not possible, a data recovery plan may be used to collect and analyze significant information, thus preserving that information. Data collection as a mitigation measure should only be implemented when other means to protect or preserve historic properties have been exhausted or are not feasible. Within the data recovery plan, specific research problems concerning scientific, humanistic, and cultural concerns will be developed. Research also will focus on problems in prehistoric and historic archaeological methods and theory. Ultimately, the data collected likely will provide information regarding the cultures that have occupied the area in the past.	Colorado Springs Utilities prepared a Treatment Plan which addresses how mitigation will be determined for each potentially eligible cultural resource site. The Treatment Plan is currently under review by the Bureau of Reclamation.	No
<b>Participants' Commitments: Indian Trust Assets</b>			
p. 19, ¶1	Continue consultation with Native American Tribes in accordance with the Programmatic Agreement. Under the Agreement, Reclamation and the SDS Participants will coordinate with the tribes to identify and mitigate impacts to any traditional cultural properties or resources.	The requirements of the Programmatic Agreement are referenced or included in the construction contract documents for each work package.	No
<b>Participants' Commitments: Noise and Vibration</b>			
p. 19, Bullet 1	Construction equipment used by contractors shall function as designed and shall conform to applicable noise emission standards.	This commitment is being incorporated into the construction contract documents for each of the work packages, as applicable.	No
p. 19, Bullet 2	Generally adhere to project work hour restrictions (7 a.m. to 7 p.m.) within 500 feet of residences, hospitals, schools, churches, and libraries. Work hours may need to be extended from time to time in order to expeditiously restore traffic flow or public access.	This commitment is being incorporated into the construction contract documents for each of the work packages, as applicable.	No
p. 20, Bullet 3	Restrict access to construction areas so that the public could not be in close proximity to loud equipment or blasting.	This commitment is being incorporated into the construction contract documents for each of the work packages, as applicable.	No



ATTACHMENT 1  
Implementation Progress Matrix

Reporting Requirements		CY2010 Annual Report Information	
Reference	Permit or Approval Document Requirement	Implementation Progress	Attachment Provided
p. 20, Bullet 4	House project operating equipment (e.g. pump stations) in structures designed to minimize radiated noise outside the structure, and will meet local noise ordinance requirements.	This commitment is being incorporated into the construction contract documents for each of the work packages, as applicable.	No
p. 20, ¶1	By following existing standards, restricting work hours and access to construction areas, and insulating new noise within structures, noise effects will be minimized by maintaining acceptable noise levels and limiting the number of people exposed to increased noise levels.	As described in the previous four responses, these commitments are being incorporated into the construction contract documents to minimize potential construction and operation impacts due to noise and vibration.	No
Participants' Commitments: Visual Resources			
p. 20, Bullet 1	Vegetate earthen dam faces with native herbaceous plants to match the adjacent undisturbed prairie plant communities.	This requirement is not applicable yet as the design of the Upper Williams Creek and Williams Creek Reservoirs did not begin during this reporting period.	No
p. 20, Bullet 2	Revegetate and/or landscape with plants, all disturbances associated with the construction of all facilities.	This commitment is being incorporated into the construction contract documents for each of the work packages, as applicable.	No
p. 20, Bullet 3	Restore as many existing grades as practicable following pipeline excavations.	This commitment is being incorporated into the construction contract documents for each of the work packages, as applicable.	No
p. 20, Bullet 4	Enclose pump stations and well equipment in structures matching the architectural characteristics of the surrounding structures.	Colorado Springs Utilitiesbegan initial coordination with the Bureau of Reclamation and Pueblo County representatives regarding the proposed architecture for the Juniper Pump Station located at Pueblo Reservoir. Colorado Springs Utilities, on behalf of the SDS Participants, attended a Pueblo County Board of County Commissioners work session regarding the proposed architecture for the Juniper Pump Station on November 10, 2010. On November 16, 2010, the Pueblo County Board of County Commissioners passed and adopted Pueblo County Resolution No. 10-299 appointing Pueblo County’s Planning Director, Kim Headley, to be Pueblo County’s representative to participate in the final selection of architecture and landscaping for the Juniper Pump Station and approving the initial stage design presented consisting principally of the exterior treatments and architecture of the proposed pump station, including the colors and building materials.	No

ATTACHMENT 1

Implementation Progress Matrix

Reporting Requirements		CY2010 Annual Report Information	
Reference	Permit or Approval Document Requirement	Implementation Progress	Attachment Provided
p. 20, Bullet 5	Construct powerlines with non-specular (not shiny) wire, non-reflective and opaque insulators, and light-colored, non-reflective finished poles.	This commitment is being incorporated into the construction contract documents for each of the work packages, as applicable.	No
p. 20, Bullet 6	Reclaim construction access roads and staging areas by restoring existing grade and revegetating the area of disturbance.	This commitment is being incorporated into the construction contract documents for each of the work packages, as applicable.	No
p. 20, Bullet 7	Apply water with standard construction practices to control airborne fugitive dust within construction areas.	This commitment is being incorporated into the construction contract documents for each of the work packages, as applicable.	No
p. 20, Bullet 8	Install baffles on construction lighting fixtures to direct light onto the construction activity only in locations where safety is a concern, scenic quality will be affected, or near occupied homes and businesses.	This commitment is being incorporated into the construction contract documents for each of the work packages, as applicable.	No
p. 20, ¶1	Restoring existing grades, revegetating disturbed areas, using architectural styles consistent with the area, and designing powerlines to have low visibility will minimize the visual contrast between the surrounding areas and will reduce the visibility of disturbance or new structures from observation points. Reducing airborne fugitive dust and construction lighting will reduce the area affected during construction.	As described in the previous eight responses, these requirements are being incorporated into the designs and construction contract documents for each work package to minimize potential impacts to visual resources.	No
<b>Participants' Commitments: Traffic</b>			
p. 20, Bullet 1	Use trenchless construction to the extent practicable when construction features cross railroad lines, state highways, county roadways in densely populated areas, and major city roadways in densely populated areas.	This commitment is being incorporated into the construction contract documents for each of the work packages, as applicable.	No
p. 20, Bullet 2	Prepare traffic control plans for approval by state and local traffic authorities and followed by contractors during construction.	This commitment is being incorporated into the construction contract documents for each of the work packages, as applicable.	No
p. 20, Bullet 3	Construct traffic signage, signals, acceleration, and deceleration lanes as directed by state and local traffic authorities for access to reservoir sites, treatment plants, and pump stations.	This commitment is being incorporated into the construction contract documents for each of the work packages, as applicable.	No
p. 21, Bullet 4	Construct improvements to existing access roads or construction of temporary alternate access roads to reservoir sites, treatment plants, and pump stations as directed by state and local traffic officials.	This commitment is being incorporated into the construction contract documents for each of the work packages, as applicable.	No
p. 21, Bullet 5	Modify or reconstruct bridges when the load limits are not adequate for construction of the SDS Project and other access routes are not reasonable.	This commitment is being incorporated into the construction contract documents for each of the work packages, as applicable.	No
p. 21, ¶1	When implemented, these recommendations will mitigate potential adverse effects on traffic by minimizing delays and promoting traffic safety.	As described in the previous five responses, these commitments are being incorporated into the construction contract documents for each work package to minimize potential construction and operations impacts to traffic flow patterns.	No



ATTACHMENT 1

Implementation Progress Matrix

Reporting Requirements		CY2010 Annual Report Information	
Reference	Permit or Approval Document Requirement	Implementation Progress	Attachment Provided
<b>Participants' Commitments: Soils</b>			
p. 21, Bullet 1	Minimize the area of disturbance to defined construction limits and limit the time bare soil is exposed.	This commitment is being incorporated into the construction contract documents for each of the work packages, as applicable.	No
p. 21, Bullet 2	Contain soils within the construction area through temporary sediment control measures such as silt fences, sediment logs, trenches, and sediment traps.	This commitment is being incorporated into the construction contract documents for each of the work packages, as applicable.	No
p. 21, Bullet 3	Remove woody vegetation prior to topsoil salvage and, to the extent possible, salvage topsoil within tree stump roots.	This commitment is being incorporated into the construction contract documents for each of the work packages, as applicable.	No
p. 21, Bullet 4	Use topsoil salvage methods including windrowing topsoil at the limits of construction and pulling the soil back on slopes during reclamation.	This commitment is being incorporated into the construction contract documents for each of the work packages, as applicable.	No
p. 21, Bullet 5	Apply topsoil, soil amendments, fertilizers, and mulches as appropriate, and seed selectively during favorable plant establishment climate conditions to match site conditions and revegetation goals.	This commitment is being incorporated into the construction contract documents for each of the work packages, as applicable.	No
p. 21, Bullet 6	To the extent practicable, avoid irrigated lands during final design.	This commitment is being incorporated into the construction contract documents for each of the work packages, as applicable.	No
p. 21, Bullet 7	To the extent practicable, allow continued use of lands crossed by project facilities after construction.	This commitment is being incorporated into the construction contract documents for each of the work packages, as applicable.	No
p. 21, Bullet 8	Where the proposed pipeline crosses prime farmland soils, develop a soils handling plan that separates the top 6 inches and the soils between 6 and 36 inches for subsequent reclamation.	This commitment is being incorporated into the construction contract documents for each of the work packages, as applicable.	No
p. 21, ¶1	Proposed mitigation measures will reduce short-term and long-term losses of soil and soil productivity. Redistribution of topsoil to soil-deficient areas will increase soil productivity in those areas. Topsoil, soil amendments, fertilizers, and mulches will increase productivity and help establish cultivated vegetation and crops. A soils handling plan for prime farmland soils will ensure high quality topsoil is preserved and distributed properly.	As described in the previous eight responses, these commitments are being incorporated into the construction contract documents for each work package to minimize potential soil erosion and loss during construction.	No
<b>Participants' Commitments: Air Quality</b>			
p. 21, Bullet 1	Develop and implement standard control practices, such as watering, to minimize particulate and dust emissions from construction work sites as specified in the fugitive dust control plan.	This commitment is being incorporated into the construction contract documents for each of the work packages, as applicable.	No
p. 21, Bullet 2	Ensure construction equipment (especially diesel equipment) meets opacity standards for operating emissions.	This commitment is being incorporated into the construction contract documents for each of the work packages, as applicable.	No
p. 21, Bullet 3	Promptly revegetate disturbed areas.	The SDS Participants are incorporating this commitment into the construction contract documents for each of the work packages, as applicable.	No
p. 21, ¶1	The proposed mitigation measures will reduce both short-term and long-term effects on air quality by following standards on construction equipment and minimizing fugitive dust.	As described in the previous two responses, these commitments are being incorporated into the construction contract documents for each work package to minimize potential air quality impacts during construction.	No

ATTACHMENT 1

Implementation Progress Matrix

Reporting Requirements		CY2010 Annual Report Information	
Reference	Permit or Approval Document Requirement	Implementation Progress	Attachment Provided
<b>Participants' Commitments: Hazardous Materials</b>			
p. 22, Bullet 1	Remove solid waste and properly dispose of at a permitted solid waste disposal facility prior to construction of project facilities at the site.	This commitment is being incorporated into the construction contract documents for each of the work packages, as applicable.	No
p. 22, Bullet 2	Inspect the ground surface beneath the solid waste for evidence of hazardous material or petroleum product spills such as soil staining and unusual odors or colors.	This commitment is being incorporated into the construction contract documents for each of the work packages, as applicable.	No
p. 22, Bullet 3	If evidence of a spill or spills is noted, delineate the extent of the spill by laboratory analysis and excavate any contaminated soils and properly dispose of at a permitted waste disposal facility.	This commitment is being incorporated into the construction contract documents for each of the work packages, as applicable.	No
p. 22, Bullet 4	If soil and/or ground water contamination is encountered during construction of project facilities, implement mitigation procedures to minimize the risk to construction workers and to the future operation of the project.	This commitment is being incorporated into the construction contract documents for each of the work packages, as applicable.	No
p. 22, ¶1	The proposed mitigation measures will identify areas of potential contamination from hazardous materials and will remediate the soil and ground water if any contamination was identified.	As described in the previous four responses, these commitments are being incorporated into the construction contract documents for each work package to minimize potential for a hazardous materials spill.	No
<b>El Paso County - Location Approvals</b>			
Final Resolution, Annual Report Requirement	This approval of location shall be subject to annual reporting by the applicant on January 31 annually and review by Development Services Department to determine compliance with all applicable requirements and standards of the El Paso County regulations and the conditions and safeguards imposed upon the approval of location by the Planning Commission. Upon completion of each periodic review, the Development Services Department shall forward its report and any recommendations to the Planning Commission, Board of County Commissioners and the holder of the approval of location. The annual report shall include:	This Permit Compliance Annual Report is being prepared to demonstrate the progress successfully implementing the commitments as prescribed in the ROD and the annual reporting requirements found in the other programmatic permits and approvals including: the Pueblo County 1041 Permit, the El Paso County Location Approvals, the CDPHE 401 Water Quality Certification and the Fountain Creek Watershed, Flood Control and Greenway District approval.	No
Annual Report Requirement, Sub-Bullet a	Evaluation of compliance with El Paso County conditions of approval	Compliance with the conditions of approval is being documented through the Site Development Plan processes for each work package. The Site Development Plan was approved for finished water pipeline segment FW1A on September 8. The Site Development Plan process was initiated for the S4B/N1A and N1B raw water pipeline segments with their application submittals on October 20 and November 17, respectively.	No

ATTACHMENT 1

Implementation Progress Matrix

Reporting Requirements		CY2010 Annual Report Information	
Reference	Permit or Approval Document Requirement	Implementation Progress	Attachment Provided
Annual Report Requirement, Sub-Bullet b	Integrated Adaptive Management Plan	The Integrated Adaptive Management Plan (IAMP) has been completed and will be submitted to the Bureau of Reclamation before contracts are finalized. The requirements of the IAMP will be coordinated with the development of the Phase II EMS that Colorado Springs Utilities will begin developing in the next reporting period. The requirements of the IAMP are not effective until SDS is operational.	No
Annual Report Requirement, Sub-Bullet c	Dust control report	The construction contract documents require the contractor to obtain an Air Pollution Emissions Notice (APEN) through the Colorado Department of Public Health & Environment and implement dust control measures as necessary to comply with the APEN requirements.	No
Annual Report Requirement, Sub-Bullet d	Weed control report	Noxious weed surveys are being completed as part of the final design and Site Development Plan processes. A noxious weed management plan is being provided to El Paso County as part of the Site Development Plan. The noxious weed management plan requirements are incorporated into the construction contract documents for each of the work packages.	No
Annual Report Requirement, Sub-Bullet e	Wildlife management report (any occurrences or actions regarding compliance with State or federal requirements)	Wildlife surveys are being completed as part of the Site Development Plan process. Habitat and species have been identified and proposed mitigation measures are identified in the wildlife survey report. Required mitigation measures will be initiated prior to construction. The construction contract documents provides direction to the contractor regarding how to handle sensitive wildlife species habitat that could be encountered during construction.	No
Annual Report Requirement, Sub-Bullet f	Cultural resources report (any occurrences or actions regarding compliance with State or federal requirements)	Class III cultural resource surveys have been completed for the NEPA corridor. In addition, a re-consultation process has been initiated with Reclamation and SHPO to address potential impacts to cultural resources as a result of construction of SDS. Colorado Springs Utilities prepared a Treatment Plan which addresses how mitigation will be determined for each potentially eligible cultural resource site. The Treatment Plan is currently under review by the Bureau of Reclamation.	No

ATTACHMENT 1  
Implementation Progress Matrix

Reporting Requirements		CY2010 Annual Report Information	
Reference	Permit or Approval Document Requirement	Implementation Progress	Attachment Provided
Annual Report Requirement, Sub-Bullet g	Groundwater and surface water monitoring report addressing water quality and quantity	A Joint Funding Agreement was executed with the U.S. Geological Survey (USGS) on the water quality monitoring program. Water quality monitoring will begin in January, 2011. See Attachment 3 for the water quality monitoring data.	Attachment 3 - Water Quality Monitoring Data (no data collected for this reporting period)
Annual Report Requirement, Sub-Bullet h	Vegetation monitoring report (status of revegetation efforts)	Since construction of the project commenced this fall, no revegetation efforts were initiated during this reporting period.	No
Annual Report Requirement, Sub-Bullet i	Complaint log and how the issues were resolved	Colorado Springs Utilities is tracking complaints received through a complaints log which includes a description of the follow-up activities that occurred to address or resolve the complaint. See Attachment 4 for the Complaint Log.	Attachment 4 - Complaint Log
Annual Report Requirement, Sub-Bullet j	Emergency response log and how the issues were resolved	Colorado Springs Utilities is tracking emergency response actions through an emergency response log which includes a description of the actions taken to resolve the issue. See Attachment 5 for the Emergency Response Log.	Attachment 5 - Emergency Response Log
Annual Report Requirement, Sub-Bullet k	Log of when work occurred during non-typical work hours (work outside the hours of 7:00 am and 6:00 pm) and rationale by which the work was deemed necessary	The typical work hours are being incorporated into the construction contract documents for each of the work packages, as applicable. Colorado Springs Utilities is tracking work which occurs during non-typical work hours through a log which includes a rationale by which the work was deemed necessary. See Attachment 6 for the Log of Work Occurring During Non-Typical Work Hours.	Attachment 6 - Log of Work Occurring During Non-Typical Work Hours

ATTACHMENT 1  
Implementation Progress Matrix

Reporting Requirements		CY2010 Annual Report Information	
Reference	Permit or Approval Document Requirement	Implementation Progress	Attachment Provided
Pueblo County - 1041 permit			
7. Expenditures for Wastewater System Improvements, p. 12	In order to continue its efforts to protect against future spills to Fountain Creek, to increase its opportunities for reuse, and to mitigate possible water quality impacts by the SDS Project to Fountain Creek, Colorado Springs Utilities shall commit to invest an additional \$75,000,000 in its wastewater system. Expenditures will be made as part of the wastewater collection system rehabilitation programs or wastewater reuse systems between January 1, 2009 and December 31, 2024 as required. These expenditures shall be for projects not currently required by other regulatory permits, agency enforcement or court orders, consent agreements, or governmental regulations existing as of January 30, 2009. These expenditures will include the Local Collector Evaluation and Rehabilitation Program (LCERP) for the improvement and fortification of wastewater lines which could adversely affect Fountain Creek or its tributaries. These expenditures are subject to annual appropriation by the Colorado Springs City Council. Beginning in 2010, by January 31 of each year, Colorado Springs Utilities shall provide an annual report to Pueblo County describing such expenditures for the prior year.	Colorado Springs Utilities submitted a wastewater expenditures report documenting 2009 expenditures to Pueblo County on January 29, 2010. Colorado Springs Utilities prepared a report documenting 2010 expenditures which is being submitted to Pueblo County on January 31, 2011.	No
25. Compliance Monitoring and Reporting, p. 18	Applicant shall monitor and periodically report to Pueblo County on its compliance with this Permit. During project construction in Pueblo County, Applicant will submit a quarterly report to Pueblo County summarizing the activities during that period, forecasting activities scheduled for the upcoming period, and addressing compliance with the terms and conditions of the Permit. After commencing deliveries of water through the SDS pipeline, Applicant shall submit annual reports to Pueblo County summarizing its activities related to the SDS Project, the Permit, and addressing compliance with the terms and conditions of the Permit. Pueblo County may, at its discretion, hold public reviews of the reports and Permit compliance, including hearings in accordance with its regulations. <i>See Mitigation Appendix ENF-1.</i>	While construction activities have not officially commenced in Pueblo County, Colorado Springs Utilities is preparing a quarterly report to address pre-construction activities which occurred during the fourth quarter of this reporting period. This first quarterly report is being submitted to Pueblo County on January 31, 2011.	No

ATTACHMENT 1  
Implementation Progress Matrix

Reporting Requirements		CY2010 Annual Report Information	
Reference	Permit or Approval Document Requirement	Implementation Progress	Attachment Provided
Mitigation Appendix ENF-1, Project Detail, Item 1, p. 22 of 28	<p>1. Submit a quarterly report during project construction in Pueblo County that will provide a summary of activities related to the Conditions of the permit. The report will summarize the activities occurring in the reporting period, and a forecast of activities planned in the upcoming period. Contents of the report will include (as applicable):</p> <ul style="list-style-type: none"> <li>a. Safety incident log.</li> <li>b. Citizen call log.</li> <li>c. Description of mitigation and restoration activities (i.e., quantity and location of repaired road surface, reseeding, etc.).</li> <li>d. List of non-compliance issues by contractors (silt releases, work hour infractions, fines and penalties).</li> <li>e. Sustainable construction practices employed.</li> <li>f. Schedule and key milestones met and forecast.</li> <li>g. Location and extent of excavations.</li> <li>h. Instances of work outside normal work hours, except maintenance activities.</li> <li>i. Status of site maintenance, security and access control to properties.</li> <li>j. Location and extent of dewatering activities.</li> <li>k. Status of other required permits, including compliance with the programmatic agreement to protect cultural resources.</li> <li>l. Dust monitoring summary.</li> <li>m. Status of drainage and erosion control measures.</li> <li>n. Status of plant and wildlife protection requirements.</li> <li>o. Status of measures to protect surface and groundwater flows.</li> <li>p. Status of livestock protection measures.</li> <li>q. Status of Clear Spring Ranch project.</li> <li>r. Status of pump station architectural review.</li> <li>s. Status of land acquisition.</li> <li>t. Status of compliance with requirements concerning Pueblo County Roads.</li> <li>u. Status of dredging at the levees on Fountain Creek in Pueblo.</li> <li>v. Status of reclamation and bonding for disturbed areas.</li> <li>w. Status of the written MOU for construction and use of the North River Outlet Works.</li> <li>x. Acceptance of the design of structures at Lake Pueblo Dam by the BOR.</li> <li>y. Status of conservation strategies, local reuse, stormwater management, drainage regulations and enforcement.</li> <li>z. Status of stormwater and wastewater system improvements per permit commitments.</li> <li>aa. Status of NEPA, ROD, contract negotiations with BOR and notice of NEPA-required mitigation and any project changes resulting from contract negotiations.</li> <li>bb. Status of payments in lieu of property taxes.</li> <li>cc. Copies of the annual reports on the SDS Project submitted to Reclamation.</li> </ul>	While construction activities have not officially commenced in Pueblo County, Springs Utilities is preparing a quarterly report to address pre-construction activities which occurred during the fourth quarter of this reporting period. This first quarterly report will be submitted to Pueblo County by January 31, 2011.	No

ATTACHMENT 1  
Implementation Progress Matrix

Reporting Requirements		CY2010 Annual Report Information	
Reference	Permit or Approval Document Requirement	Implementation Progress	Attachment Provided
Mitigation Appendix ENF-1, Project Detail, Item 2, p. 23 of 28	<p>2. Submit an annual report to Pueblo County that will provide a summary of activities related to the SDS Project and the Conditions of the Permit. These reports will be due annually on or before January 31, beginning the year following commencement of water deliveries through the SDS pipeline. The reports shall include a signed certification of compliance with the Permit. Contents of the report will include, but will not be necessarily limited to:</p> <ul style="list-style-type: none"><li>a. Summary of storage, diversion, delivery of water in Pueblo County.</li><li>b. Summary of Participants’ return flows to Fountain Creek including storage and releases of such return flows (maximum daily flows, average annual and monthly flows and amounts).</li><li>c. Summaries of exchanges by Participants between Pueblo Reservoir and the Fountain Creek confluence (monthly and annual rates of flow and quantities).</li><li>d. Use of any new water rights to be delivered or stored through SDS (amount, time, source).</li><li>e. Water quality monitoring.</li><li>f. Geomorphology monitoring.</li><li>g. Status of adaptive management plans on Fountain Creek.</li><li>h. Status of payments into the Fountain Creek monetary mitigation fund.</li><li>i. Status of expenditures for wastewater system improvements for Participants (and third party users in the Fountain Creek basin) per Permit Conditions.</li><li>j. Reports on the operation of the Pueblo Flow Management Program and the Low Flow Program (rates, and quantities, and times of foregone exchanges, releases, and reception documentation).</li><li>k. Status of lake level management cooperative efforts with other entities at Pueblo Reservoir.</li><li>l. Status of conservation and local reuse.</li><li>m. Payments to Pueblo County in lieu of property taxes.</li><li>n. Copies of the annual reports on the SDS Project submitted to Reclamation.</li></ul>	The annual report requirement was not applicable during this reporting period since SDS is not operational.	No
CDPHE - 401 Water Quality Certification			
Certification Statement, Bullet 4, p. 6	All collected raw data and annual reports developed as a requirement of other agency conditions will be submitted to the Division at the same time they are submitted to the requiring regulatory agency. Data and reports will be submitted directly to the Environmental Data Unit in an electronic data format agreed to by the Division.	The SDS Permit Compliance Annual Report for Calendar Year 2010 has been prepared to address the annual reporting requirements for all of the major programmatic permits. Colorado Springs Utilities will post this annual report to the SDS website (sdswater.org) where it can be accessed by all interested regulatory agencies or members of the public.	No

ATTACHMENT 1  
Implementation Progress Matrix

Reporting Requirements		CY2010 Annual Report Information	
Reference	Permit or Approval Document Requirement	Implementation Progress	Attachment Provided
Fountain Creek WFCGD - Resolution 2010-01			
Technical Advisory Committee Condition 2, p. 3 (Also Citizen Advisory Committee Condition 2)	<p>The Integrated Adaptive Management Plan (IAMP) shall be submitted to the District for review, and periodic reports on water quality and quantity shall be provided to the District.</p> <p>The Integrated Adaptive Management Plan (IAMP) will include how mitigation will be performed in case there are problems that were not anticipated during the project. This will include means and methods to address impacts from the project and specific triggers to initiate the process. Once the IAMP is finalized there will be an opportunity for comment.</p>	The IAMP has been completed and will be submitted to the Bureau of Reclamation before the contracts are finalized. The IAMP will also be provided to the District at that time. The District will be copied on next year's water quality monitoring report, after water quality monitoring begins.	No



# Monthly Average Flow Data from USGS Gauge Station No. 07106500 Fountain Creek at Pueblo

---

**ATTACHMENT 2**  
 USGS Gauge Station No: 07106500  
 FOUNTAIN CREEK AT PUEBLO, CO  
 Pueblo County, Colorado  
 Hydrologic Unit Code 11020003  
 Latitude 38°17'16", Longitude 104°36'02" NAD27  
 Drainage area 926 square miles  
 Gage datum 4,705 feet above sea level NGVD29

00060, Discharge, cubic feet per second,												Annual Average Flow
YEAR	Monthly mean in cfs (Calculation Period: 2010-01-01 -> 2010-09-30)											
	Period-of-record for statistical calculation restricted by user											
	Jan	Feb	Mar	Apr	May	Jun	Jul	Aug	Sep	Oct	Nov	
2010 Mean of Monthly Discharge	129.7	136.2	143.1	210.6	182.6	62.9	91.8	198.7	31	Not available as of January 26, 2011		131.8

- Notes:
1. No incomplete data has been used for the statistical calculations shown in the table.
  2. Data in this table is from USGS National Water Information System: Web Interface ([waterdata.usgs.gov/nwis/monthly](http://waterdata.usgs.gov/nwis/monthly)).
  3. The annual average is computed from the monthly mean data published by the U.S. Geological Survey.

## Water Quality Monitoring Data

---

No attachment is provided since there was not any water quality monitoring data collected during this reporting period. A Joint Use Agreement has been executed with the U.S. Geological Survey to begin the water quality monitoring program in January, 2011.

## Complaint Log

---

No attachment is provided because no complaints regarding construction of SDS were received during this reporting period.

# Emergency Response Log

---

No attachment is provided because no emergency response incidents associated with construction of SDS occurred during this reporting period.

# Log of Work Occurring During Non-Typical Work Hours

---



**LOG OF NON-STANDARD WORK HOURS**  
**Southern Delivery System**

					Work Location: <b>Finished Water 1A</b>		
NON-STANDARD HOURS WORKED					AGENCY/PERSON CONTACTED	Contact By	Contact
DATE	START	END	Initials	CIRCUMSTANCES REQUIRING OFF-HOURS WORK		Phone (P)	Date
						Email (E)	
12/29/10	6:00PM	9:00PM	BG	Day extended to accommodate the completion of the roadway pavement repair	El Paso County Office	Phone	12/29/2010
12/28/10	6:00PM	8:30PM	BG	Day extended to accommodate the completion of welding operations in order to stay on schedule	El Paso County Office	Phone	12/28/2010
10/10/10	7:00AM	5:00PM	TL	54 inch pipe installation per County direction	El Paso County Office	Phone	10/08/2010
10/09/10	7:00AM	8:00PM	TL	54 inch pipe installation per County direction	El Paso County Office	Phone	10/08/2010
10/08/10	4:00PM	11:30PM	TL	54 inch pipe installation per County direction	El Paso County Office	Phone	10/08/2010
10/03/10	7:00AM	3:30PM	TL	42 inch pipe installation per County direction	El Paso County Office	Phone	10/01/2010
10/02/10	7:00AM	8:00PM	TL	42 inch pipe installation per County direction	El Paso County Office	Phone	10/01/2010
10/01/10	4:00PM	12:00PM	TL	42 inch pipe installation per County direction	El Paso County Office	Phone	10/01/2010