



1041 200-002

Lake Pueblo

SDS Pipeline Easement

Photo Monitoring Guide



Questions? Please Contact:

Jeff Thompson – Resource Stewardship Coordinator
Colorado State Parks
6060 Broadway
Denver, CO 80216
303.291.7156
Jeff.Thompson@state.co.us



RECEIVED

DEPARTMENT OF PLANNING
AND DEVELOPMENT

229 West 12th Street, Pueblo, CO 81003-2810~719-583-6100

via E-mail July 27, 2015

Photo Points – Photo Descriptions

Six photopoints were established in June of 2015 to assist with the monitoring of the revegetation efforts along the SDS pipeline corridor easement. An attempt was made to take eight photos at each point, with two photos taken in each of the four cardinal directions (one photo aimed 10m from the point, and one with skyline showing for reference). At point two, photos were taken on bearings to best capture the revegetation in the photo. And at some points, photos were omitted because they did not depict the revegetation at that bearing.

When duplicating this monitoring, be sure to bring photos from previous monitoring sessions to duplicate what is in the frame of previous photos as close as possible. Photo points begin where the pipeline corridor enters the park's north boundary and end at the point where the 'Honor Farm' parcel meets the City of Pueblo property just north of the railroad grade near Pueblo West.

Project Area

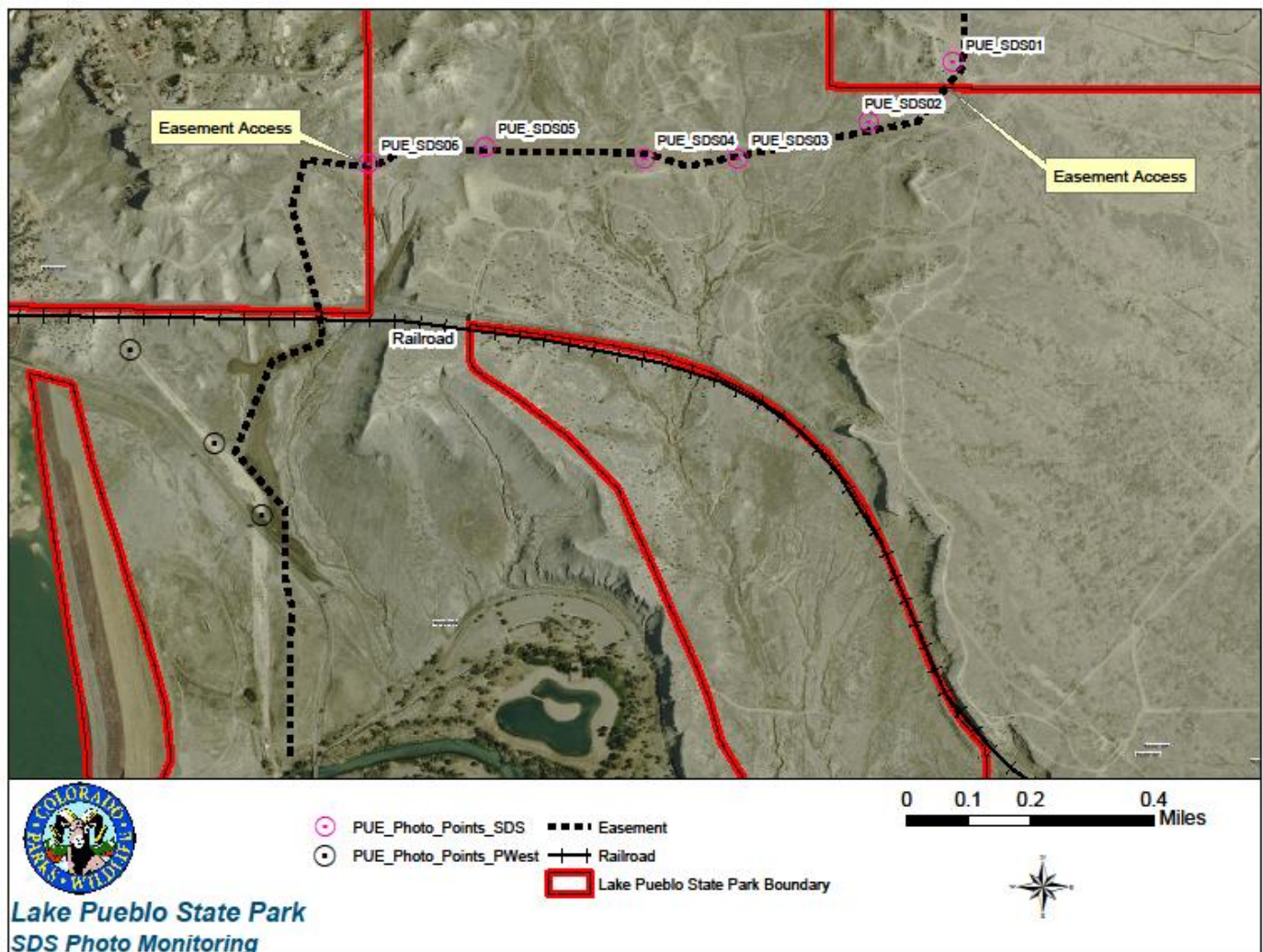


Table: Photo Monitoring Coordinates

Photo Point	X_coordinate	Y_coordinate
Point 1 SDS	104° 42'01"W	38° 17'16"N
Point 2 SDS	104° 42'10"W	38° 17'11"N
Point 3 SDS	104° 42'24"W	38° 17'8"N
Point 4 SDS	104° 42'34"W	38° 17'8"N
Point 5 SDS	104° 42'51"W	38° 17'9"N
Point 6 SDS	104° 42'65"W	38° 17'9"N

Photo Monitoring Protocols

A. Monitoring Protocols

- a. Bring this guide and photos from previous monitoring visits so that you can duplicate photos
- b. Each photo should include vegetation and mimic the photos previously taken at that location
 - i. Photos taken of close up vegetation should include markers
 - ii. Photos taken of distant vegetation should include horizon/skyline
- c. Download photos from camera
 - i. Preferably to a computer at the park visitors center
 - ii. Label file folder in the following way:
 1. PUE_SDS_Photomonitoring_month_day_year
- d. Naming photos – name in the following format:
 - i. PUE_SDS_photopointX_N/E/S/W_month_day_year
 1. The “X” in photopoint is the corresponding photo point number
 2. N/E/S/W = choose the approximate direction of this photo
- e. Input photos into the Photo Monitoring Report format found on the next page
 - i. Change the date on the Report to reflect the date your photos were taken
 - ii. Copy and paste each photo into the appropriate text box – see photo point descriptions
- f. Report and a file of the photos should be immediately sent to:
 - i. Jeff Thompson – State Parks Resource Stewardship Coordinator – jeff.thompson@state.co.us
- g. State Parks Stewardship section will file reports on photo monitoring.

Photo Point 1

Description – this photo point is one of two mid-creek points and is the northern of these two points (the nearer to Photo Point 8), on the west side of the creek. 6 photos total.

- Photo 1 – North 10m from photopoint
- Photo 2 – North with skyline
- Photo 3 – East 10m from photopoint
- Photo 4 – East with skyline
- Photo 5 – South 10m from photopoint
- Photo 6 – South with skyline
- Photo 7 – West 10m from photopoint
- Photo 8 – West with skyline

1



2



3



4



5



6



7



8



Photo Point 2

Description – The road crosses the pipeline at this point

- Photo 1 – aimed 138° down
- Photo 2 – aimed 138° up
- Photo 3 – aimed 258° down
- Photo 4 – aimed 258° up

1



2



3



4



Photo Point 3

Description – this photo point is located at a valve midway along the pipeline corridor

- Photo 1 – North 10m from photopoint
- Photo 2 – North with skyline
- Photo 3 – East 10m from photopoint
- Photo 4 – East with skyline
- Photo 5 – South 10m from photopoint
- Photo 6 – South with skyline
- Photo 7 – West 10m from photopoint
- Photo 8 – West with skyline



1



2



3



4





7



8



Photo Point 4

Description – this photo point is on top of a rise along the pipeline corridor

- Photo 1 – North 10m from photopoint
- Photo 2 – North with skyline
- Photo 3 – East 10m from photopoint
- Photo 4 – East with skyline
- Photo 5 – South 10m from photopoint
- Photo 6 – South with skyline
- Photo 7 – West 10m from photopoint
- Photo 8 – West with skyline

1



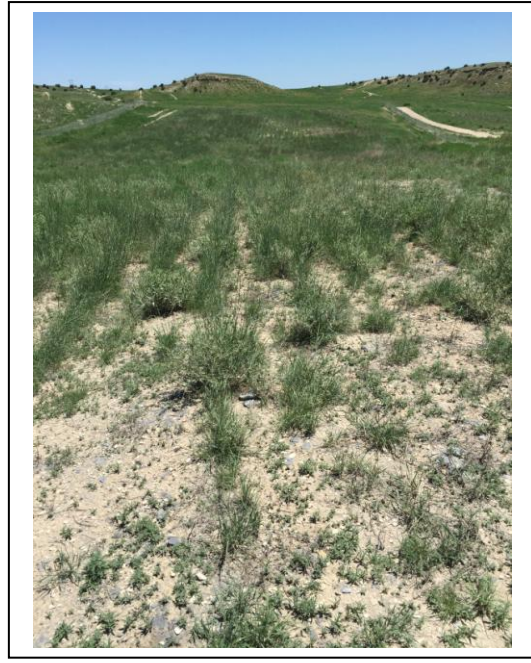
2



3



4



5



6



7



8



Photo Point 5

Description – this photo point is located on the road where it crosses the pipeline corridor

- Photo 1 – East 10m from photopoint
- Photo 2 – East with skyline
- Photo 3 – West 10m from photopoint
- Photo 4 – West with skyline

1



2



3



4

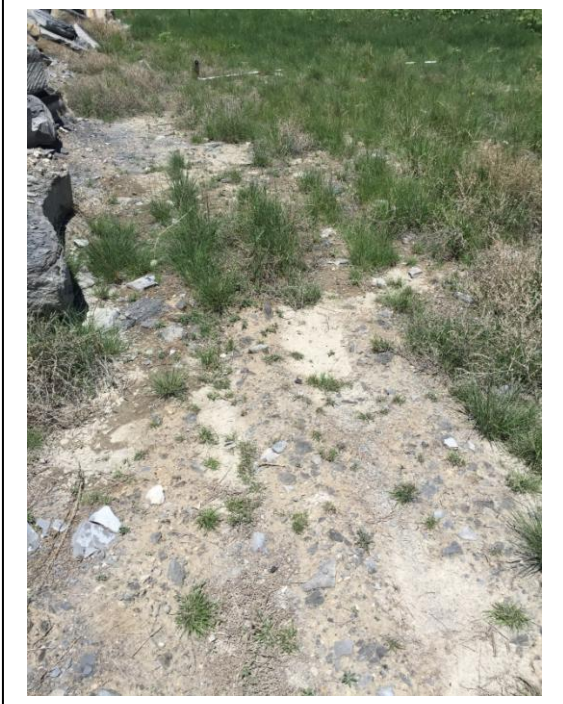


Photo Point 6

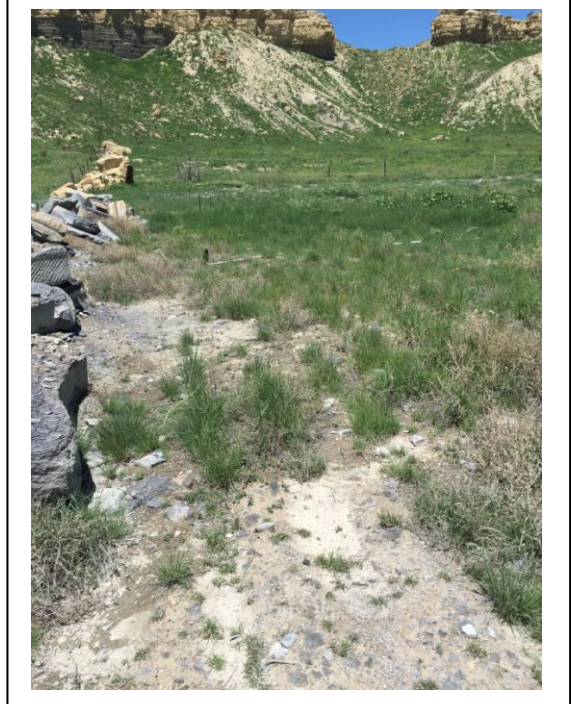
Description – this photo point is at barricade where park boundary meets city property near Pueblo West

- Photo 1 – North 10m from photopoint
- Photo 2 – North with skyline
- Photo 3 – East 10m from photopoint
- Photo 4 – East with skyline
- Photo 5 – aimed South (only one South photo) along bndry
- Photo 6 – West 10m from photopoint
- Photo 7 – West with skyline

1



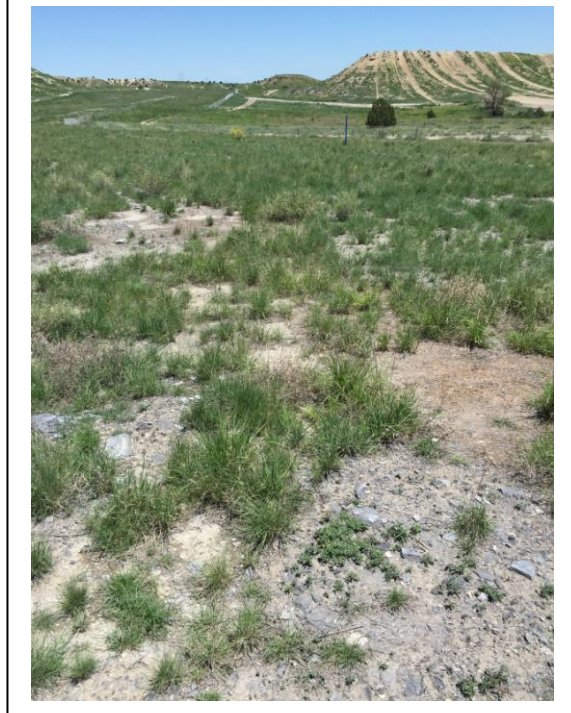
2



3



4



5



6



7

